



# 3D Adjustable Concealed Hinge

## MODEL NO. KCH6080

**NOTE:**

- 1.For indoor use only ,not suitable for areas where it can be direct contact with water.
- 2.Please check with manufacturer in advanced if use with a door closer in order to make sure correct use.
- 3.The door is possible could not close if the door is deformed.
- 4.Need to check the screw at regular time to make sure it is fixed.

**COMPONENT PARTS**

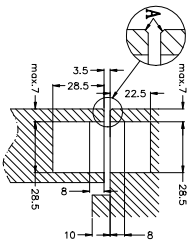
- \*Concealed Hinge 2 pcs
- \*Cover 8 pos(door side x 4 ,frame side x 4)
- \*Screw (5x30) 8 pcs
- \*Allen wrench S4 1 pc
- \*Installation Manual 1 pc

**ADJUSTMENT**

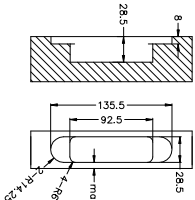
Vertical	±2mm
Horizontal	-2mm,+4mm
Depth	±1mm

**ROUTING DRAWING**

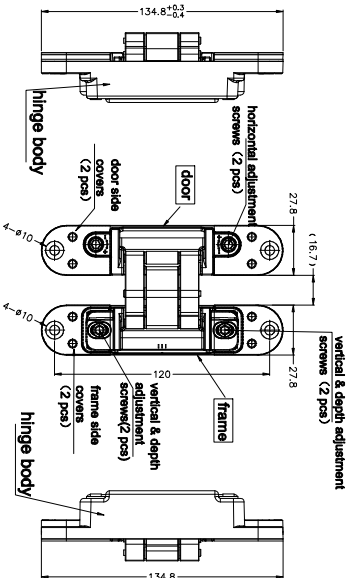
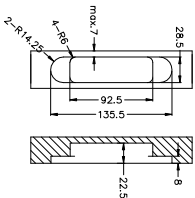
NOTE: The edge of door and frame need to be applied with C1 or R1 processing (refer to "A" in the drawing)



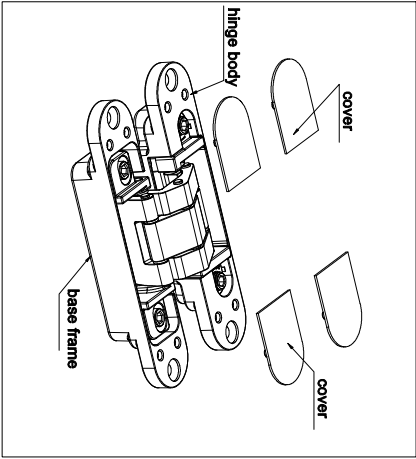
routing drawing for door side



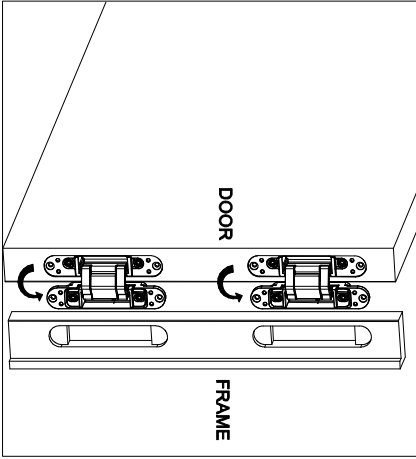
routing drawing for frame side



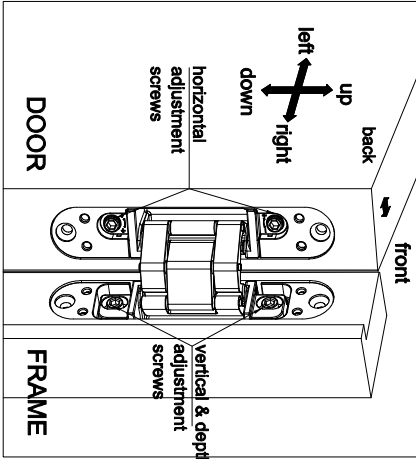
**a. HINGE DETAIL**



**b. INSTALLATION**



**c. ADJUSTMENT**  
(direction arrows when door is in closing situation)



**INSTALLATION STEP:**

- 1. Refer to figure a, remove the covers from hinge.
- 2. Install door side parts into door cutout position.
- 3. Refer to figure b, temporarily hang the door by inserting both upper and lower frame parts into the frame cutout position at the same time.
- 4. Make sure all screws are fixed after installation.

**NOTE:**

- 1. Make sure the hinge body is installed in correct position on door and frame.
- 2. Do not open/close with excessive force, or door may fall down.

**ADJUSTMENT STEP:**

- 1. Vertical adjustment**  
Loosen vertical & depth adjustment screw one turn with allen key to adjust. Then tighten screws once the door in proper height.
- 2. Depth adjustment**  
Loosen vertical & depth adjustment screw one turn with allen wrench to adjust. Then tighten screws once the door in proper position.

**NOTE:**

- 1. Recommended fastening force for vertical and depth adjustment is 3N.m(30.8kgf.cm).
- 2. To prevent door falling, do not remove vertical adjustment screws.

**3. Horizontal adjustment**

Turn the horizontal adjustment screw in clockwise direction to widen the gap between door and frame. To narrow the gap, turn the screw in counter clockwise direction.

**NOTE:**

- 1. Gently turn horizontal adjustment screws for upper and lower hinge at the same time, do not force turning of screws.
- 2. Do not loosen the horizontal adjustment screws in clockwise direction over than 3mm, or door may fall.

**4. Finally, install all covers.**

**NOTE:**

- 1. Do not handle the covers with excessive force or they may break.

Selection Chart

KCH6080	DW (mm)							Max. Door Weight (kg)
	800	850	900	950	1000	1050	1100	
DH (mm)	2100	2	2	2	3	3	3	60
	2200	3	3	3	3	3	3	
	2400	3	3	4	4	4	4	
	2600	3	3	4	4	4	4	
	2800	4	4	4	4	4	4	
	3000	4	4	4	4	4	4	

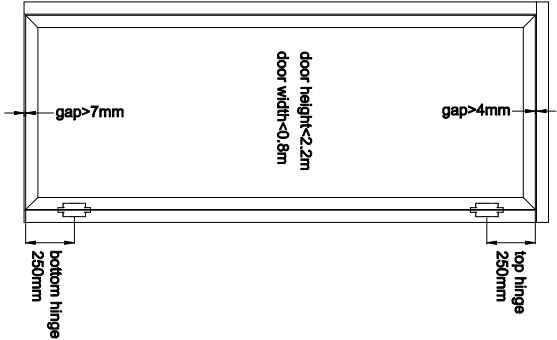
Number of hinges

KCH6080	DW (mm)							Max. Door Weight (kg)
	800	850	900	950	1000	1050	1100	
DH (mm)	2100	3	3	3	4	4	4	70
	2200	3	3	3	4	4	4	
	2400	3	3	4	4	4	4	
	2600	3	3	4	4	4	4	
	2800	4	4	4	4	4	4	
	3000	4	4	4	4	4	4	

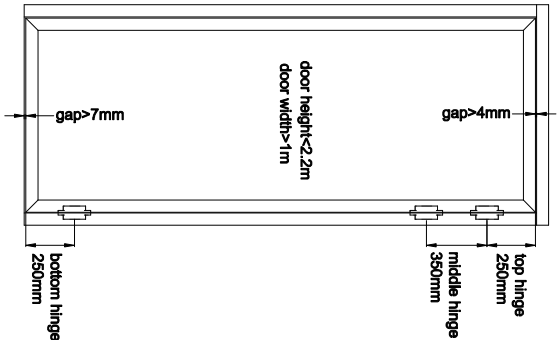
Number of hinges

Installation Position

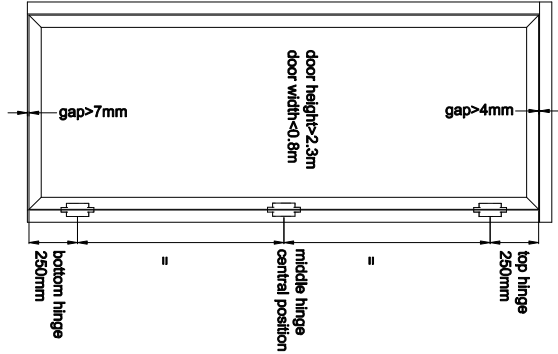
Normal Door



Over-width Door



Over-height Door



Over-height & width Door

