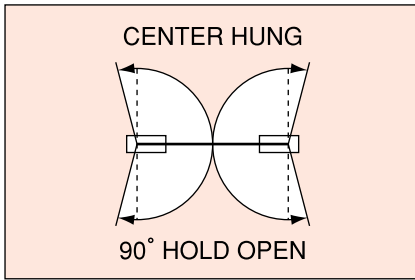


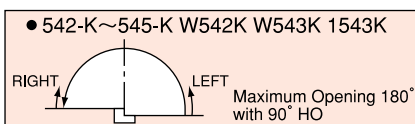
## CENTER HUNG Double Action



Model		MAXIMUM DOOR		PAGE
(90°)Hold Open	Non-Hold Open	WIDTH×HEIGHT(mm)	WEIGHT (kg)	
<b>■TIMBER and STEEL DOORS</b>				
ST-81	T-81	950×2,100	120	5
ST-82	T-82	1,050×2,100	200	5
ST-83	T-83	1,200×2,250	250	5
ST-210N	T-210N	800×1,800	55	6
ST-220N	T-220N	900×2,100	80	6
D-22	22	950×2,100	110	6
D-23	23	1,000×2,100	130	6
1001-S	1001	900×2,100	70	7
1002-S	1002	950×2,100	100	7
1003-S	1003	1,050×2,400	120	7
1051-S	1051	900×2,100	70	7
1052-S	1052	950×2,100	100	7
1053-S	1053	1,050×2,400	120	7
ST-33	T-33	1,050×2,100	160	8
ST-335	T-335	1,050×2,400	160	8
ST-44	T-44	1,050×2,400	200	9
ST-45	T-45	1,200×2,400	250	9
ST-46	T-46	1,500×2,700	280	9
SH-30	H-30	950×2,100	120	9
SH-40	H-40	1,050×2,400	185	9
<b>■TEMPERED GLASS DOORS</b>				
ST-181	T-181	914×2,134	120	11
ST-182	T-182	1,067×2,134	200	11
ST-183	T-183	1,200×2,134	250	11
1001-SG	1001-G	762×2,134	70	12
1002-SG	1002-G	914×2,134	100	12
1003-SG	1003-G	1,067×2,134	120	12
ST-133	T-133	1,067×2,134	160	12
D-122	122	762×2,134	110	13
SH-130	H-130	914×2,134	120	13
SH-140	H-140	1,067×2,438	185	13
ST-144	T-144	1,067×2,134	200	14
ST-145	T-145	1,219×2,438	250	14

## OFFSET HUNG Single Action

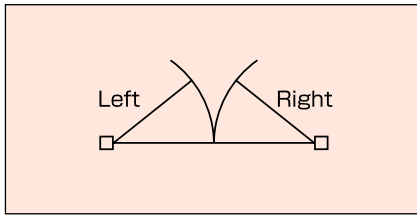
HO and NHO, double functions in one bddy.



Model		MAXIMUM DOOR		PAGE
(90°)Hold Open	Non-Hold Open	WIDTH×HEIGHT(mm)	WEIGHT (kg)	
<b>■STEEL DOORS</b>				
	542K	950×2,100	70	16
	543K	1,050×2,200	110	16
	544K	1,200×2,300	150	16
	545K	1,600×2,400	185	16
<b>■TIMBER DOORS</b>				
	W542K	950×2,100	70	16
	W543K	1,050×2,200	110	16
<b>■TEMPERED GLASS DOORS</b>				
	1543K	914×2,134	110	16

# PIVOT HINGES

## OFFSET HUNG



Model	MAXIMUM DOOR		PAGE
	WIDTH×HEIGHT(mm)	WEIGHT (kg)	
<b>■OFFSET HUNG</b>			
11D	900×2,100	80	19
11CD	900×2,100	80	19
11C	900×2,100	80	19
13CD	1,050×2,200	120	20
13C	1,050×2,200	120	20
2CAD	1,500×2,400	180	20
2CA	1,500×2,400	180	20
3CAD	1,800×3,000	300	21
3CA	1,800×3,000	300	21
11B	900×2,100	80	21
13B	1,050×2,200	120	22
2BC	1,500×2,400	180	22
2B	1,500×2,400	180	22
3BC	1,800×3,000	300	23
3B	1,800×3,000	300	23
S-4B	4,000×5,000	1,000	23
SW-11D	900×2,200	80	24
SW-11CD	900×2,100	80	24
SW-11C	900×2,100	80	24
SW-11B	900×2,100	80	25

※S-4B is also applicable to maximum door weight up to 1,000kg. Specify if required.

## CENTER HUNG

Model	MAXIMUM DOOR		PAGE
	WIDTH×HEIGHT(mm)	WEIGHT (kg)	
<b>■CENTER HUNG</b>			
S-1AF	900×2,100	100	25
S-1A	900×2,100	100	26
S-2A	1,500×2,400	180	26
S-3A	1,800×3,000	300	27
S-4A	4,000×5,000	1,000	27

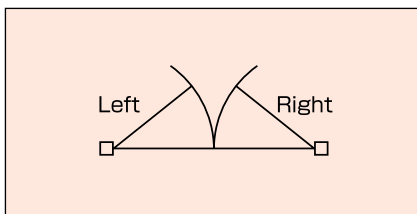
※S-4A, is also applicable to maximum door weight up to 1,000kg. Specify if required.

# AUTO HINGES

## CONCEALED type CENTER HUNG Single Action

### ■FEATURES

- Suitable for fire doors
- Easy to install
- Fully concealed
- Outstanding durability
- Simple speed adjustment



MAXIMUM OPENING ANGLE	Model	DOOR DIMENTIONS		PAGE
		WIDTH×HEIGHT×DEPTH	WEIGHT (kg)	
<b>■WICKET DOOR</b>				
CENTER HUNG 180° LEFT or RIGHT	AH-8K	800×1,850×36	40	29
<b>■FIRE DOOR</b>				
CENTER HUNG 180° LEFT or RIGHT	AH-8	800×2,000×36	50	29
	AH-10	1,000×2,100×40	85	30
	AH-12	1,200×2,100×40	100	30
	AH-14	1,400×2,100×40	130	30
	AH-16	1,600×2,400×45	160	31
	AH-18	1,800×2,400×50	200	31
	AH-22	2,200×2,400×50	240	31
	AH-26	2,600×2,600×55	310	32
	AH-30	3,000×2,600×55	410	32
	AH-30H	3,000×2,600×55	510	32
	AH-35	3,500×2,800×60	650	33
	AH-40	4,000×3,000×65	800	33

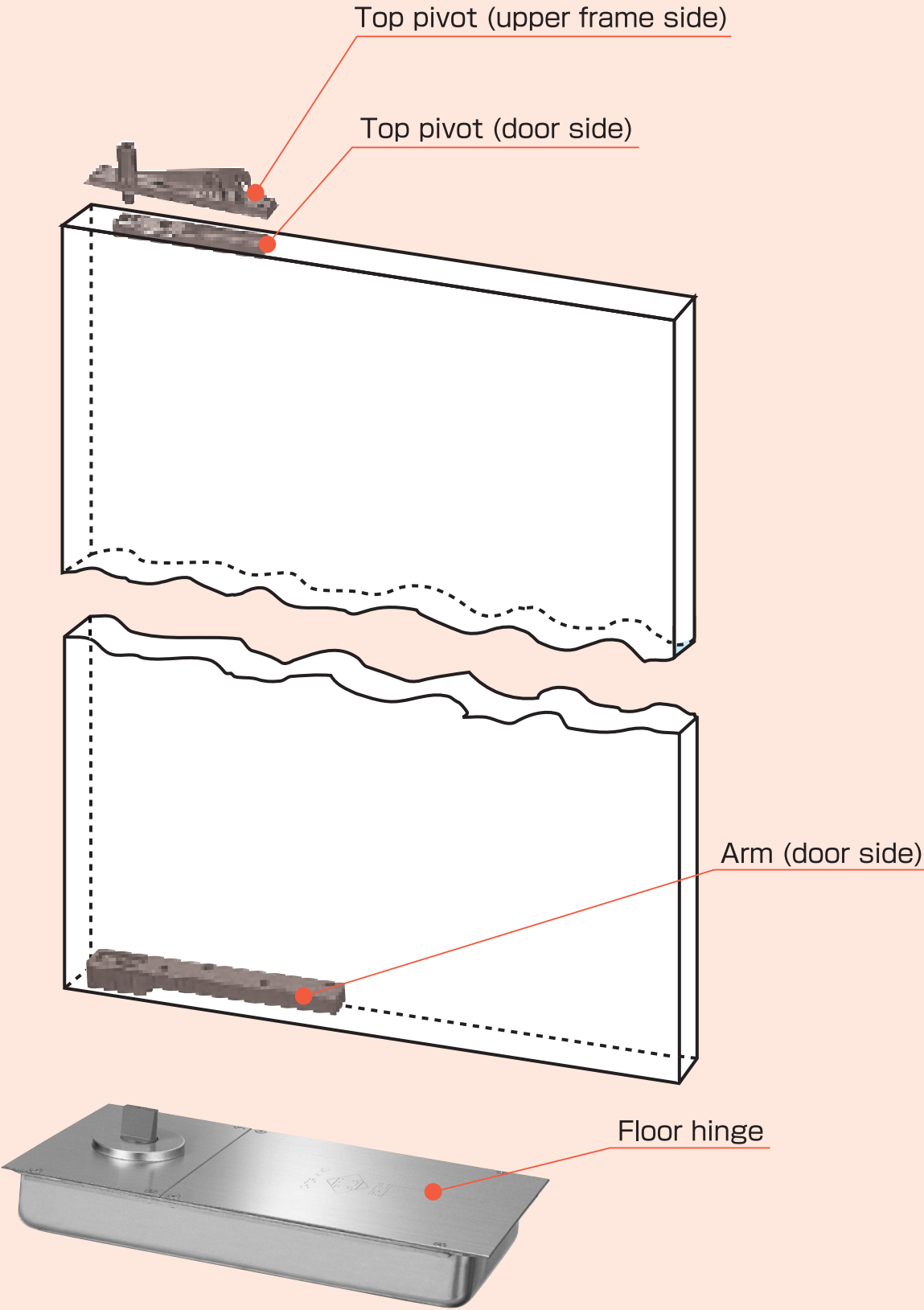
Please note that the specifications on this leaflet may be improved without notice.

# FLOOR HINGES



## CENTER HUNG Double Action

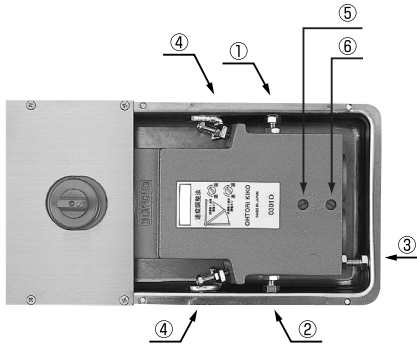
STANDARD SETTING OF DIA FLOOR HINGES FOR WOOD OR STEEL FRAMED DOORS:



# ST-81·T-81/ST-82·T-82/ST-83·T-83

## Thermo Constant All Seasons.

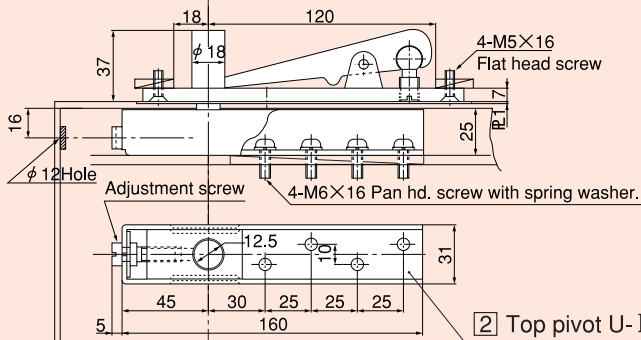
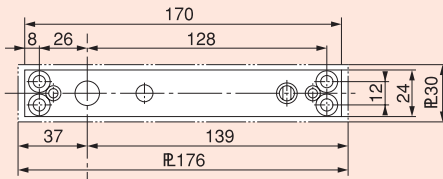
No speed adjustment required between (-10°~50°)



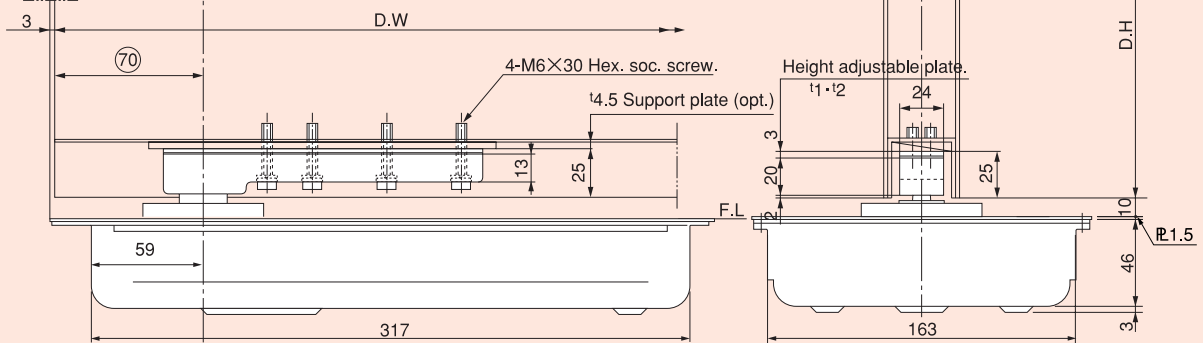
- ① Door closure position adjusting screw
- ② Door closure position adjusting screw
- ③ Door moving direction adjusting screw
- ④ Door moving direction adjusting screw
- ⑤ Door closing speed adjusting valve
- ⑥ Door closing speed adjusting valve

Model		Maximum Door	Weight
(90°) Hold Open	Non-Hold Open	Width×Height (mm)	(kg)
ST-81	T-81	950×2,100	120
ST-82	T-82	1,050×2,100	200
ST-83	T-83	1,200×2,250	250

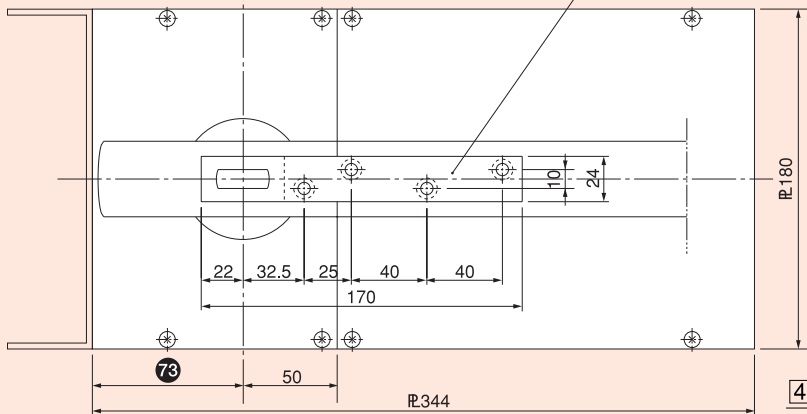
1 Top pivot (upper frame side)



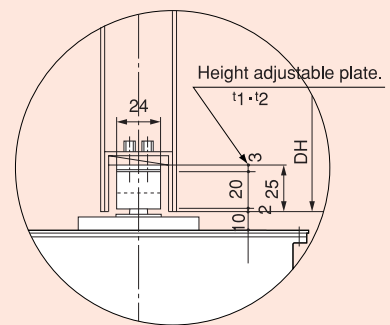
2 Top pivot U- II (door side)



3 Arm (door side)

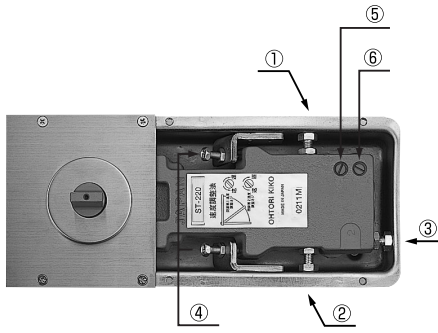


4 Floor hinge body only (floor side).



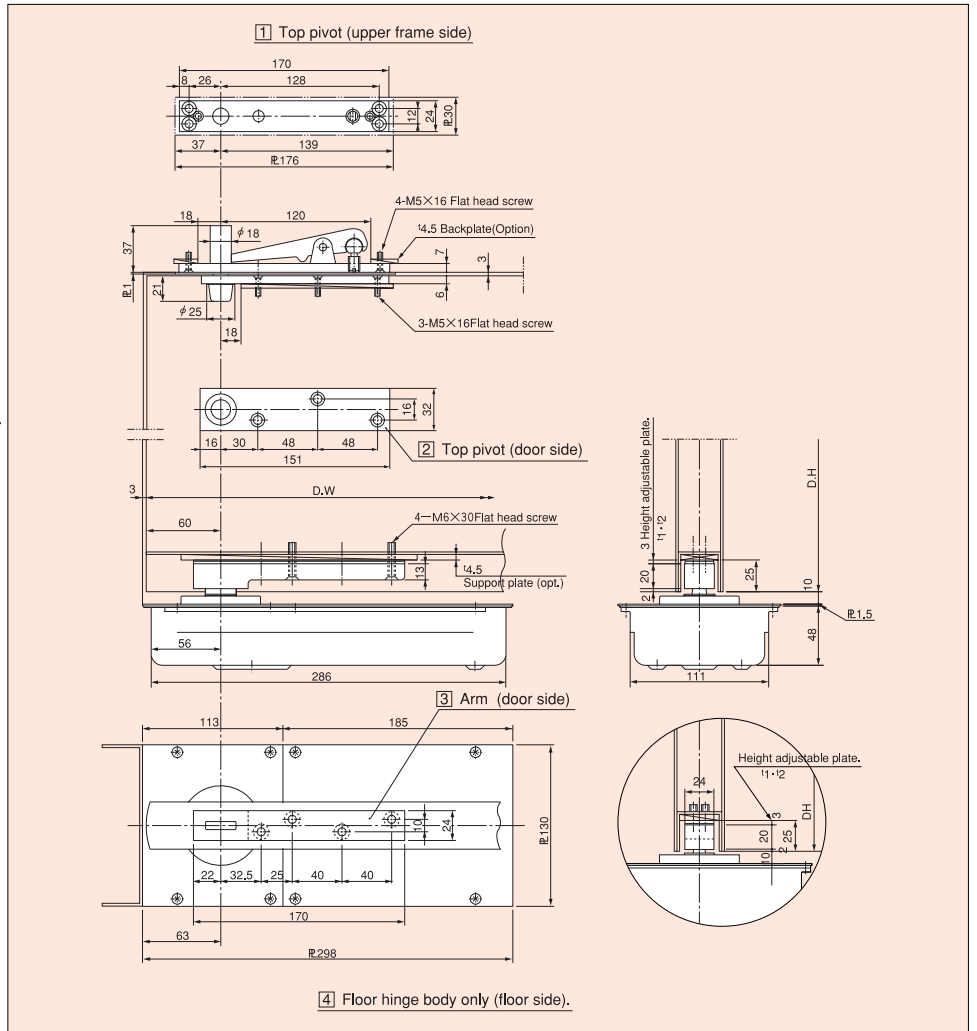
Note: For ST-81, 82 and 83 series, the dimension between spindle center of floor plate and vertical frame is 73mm. Specify if "63mm" is necessary.

# ST-210N·T-210N ST-220N·T-220N

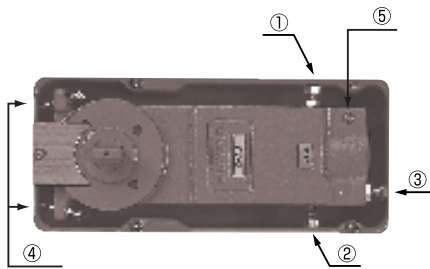


- ① Door closure position adjusting screw
- ② Door closure position adjusting screw
- ③ Door moving direction adjusting screw
- ④ Door moving direction adjusting screw
- ⑤ Door closing speed adjusting valve
- ⑥ Door closing speed adjusting valve

Model		Maximum Door	Weight
(90°) Hold Open	Non-Hold Open	Width×Height (mm)	(kg)
ST-210N	T-210N	800×1,800	55
ST-220N	T-220N	900×2,100	80

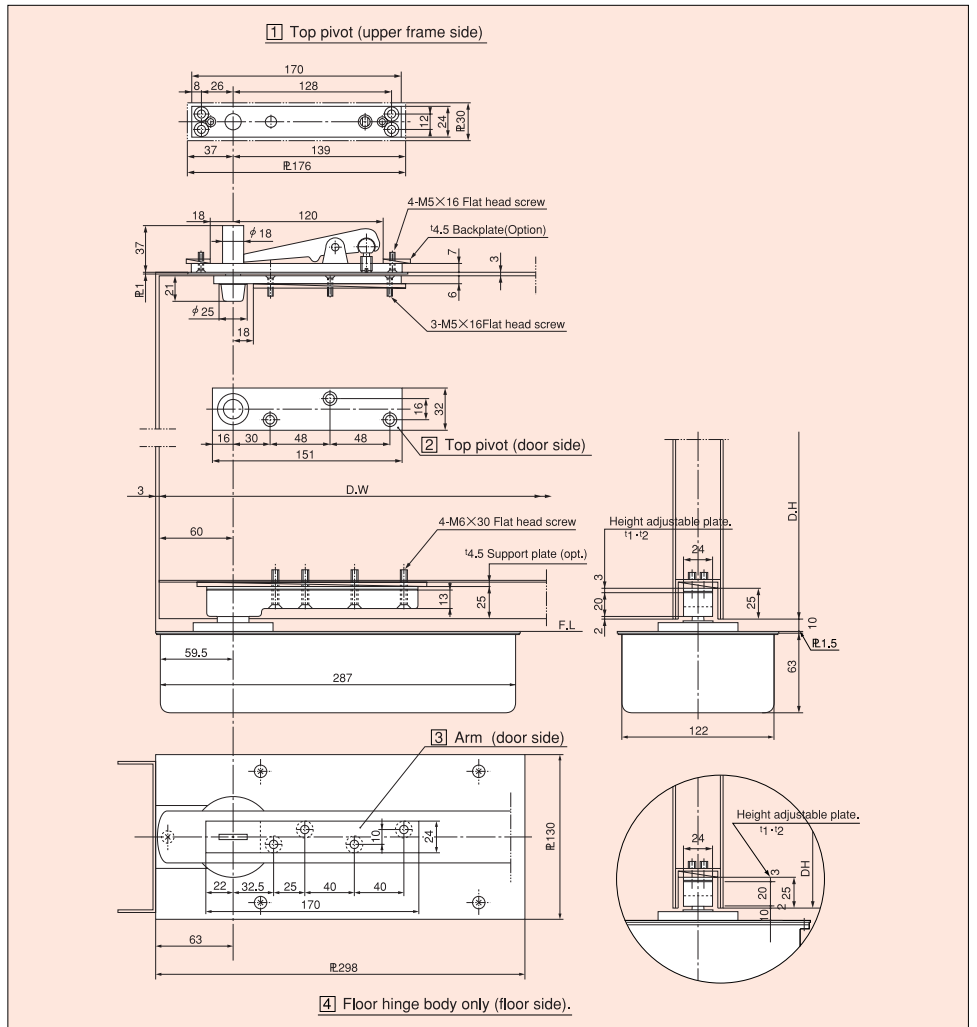


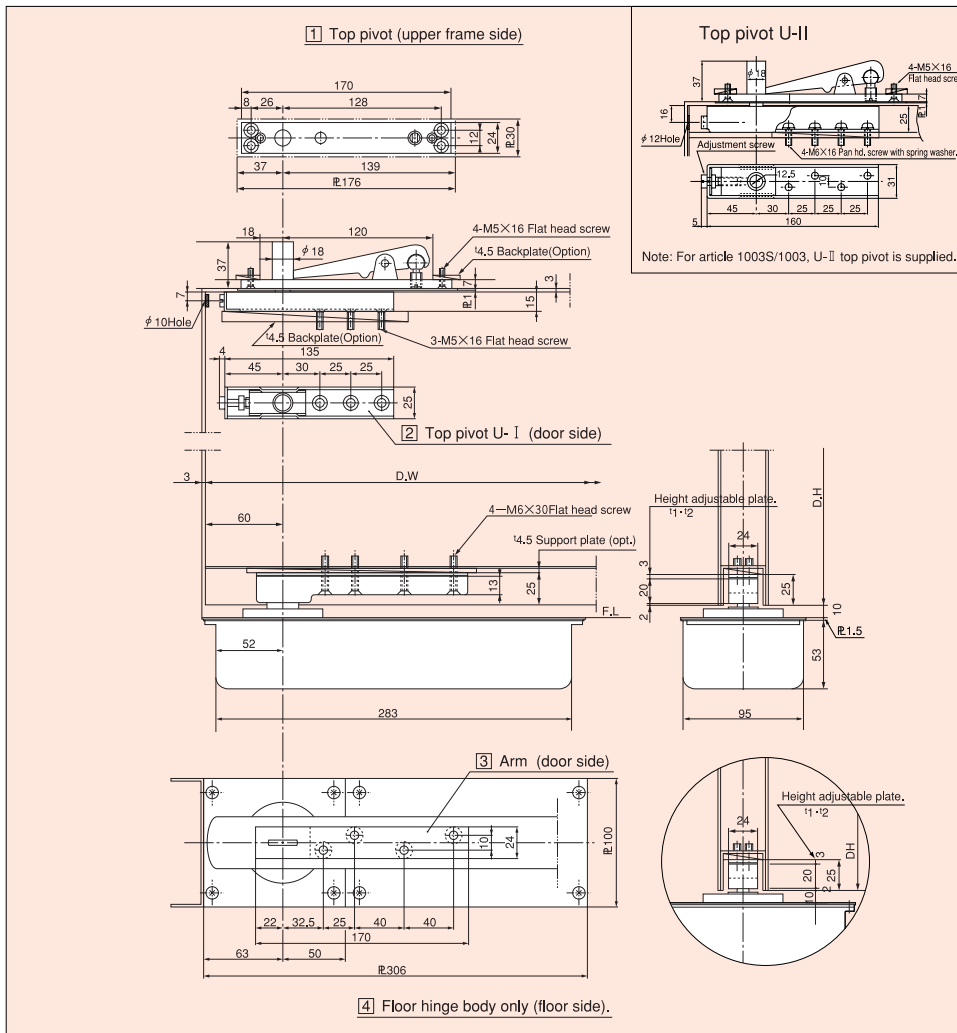
# D-22·22 D-23·23



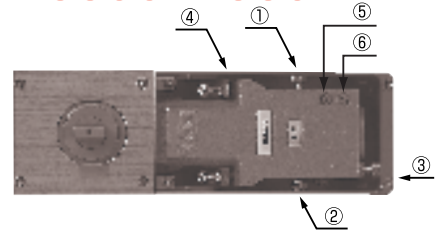
- ① Door closure position adjusting screw
- ② Door closure position adjusting screw
- ③ Door moving direction adjusting screw
- ④ Door moving direction adjusting screw
- ⑤ Door closing speed adjusting valve

Model		Maximum Door	Weight
(90°) Hold Open	Non-Hold Open	Width×Height (mm)	(kg)
D-22	22	950×2,100	110
D-23	23	1,000×2,100	130



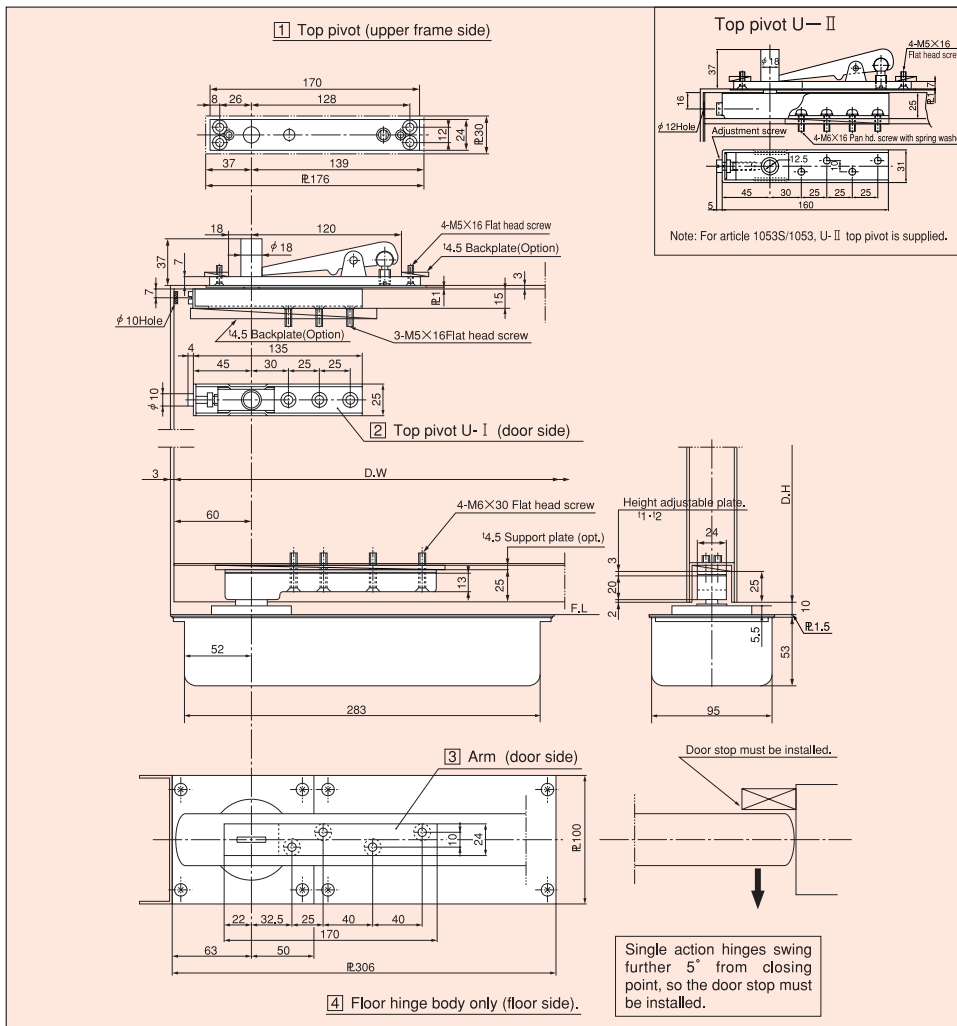


**1001S · 1001**  
**1002S · 1002**  
**1003S · 1003**

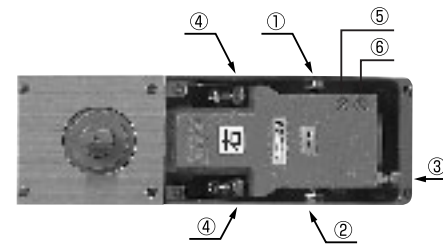


- ① Door closure position adjusting screw
- ② Door closure position adjusting screw
- ③ Door moving direction adjusting screw
- ④ Door moving direction adjusting screw
- ⑤ Door closing speed adjusting valve
- ⑥ Door closing speed adjusting valve

Model	Maximum Door		Weight
	(90°) Hold Open	Non-Hold Open	
1001-S	1001	900×2,100	70
1002-S	1002	950×2,100	100
1003-S	1003	1,050×2,400	120



**1051-S · 1051**  
**1052-S · 1052**  
**1053-S · 1053**

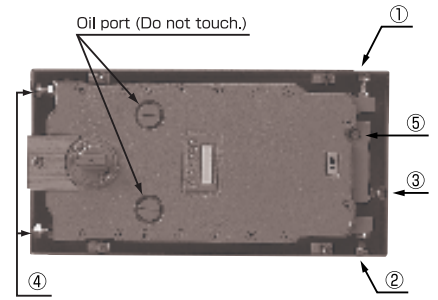


- ① Door closure position adjusting screw
- ② Door closure position adjusting screw
- ③ Door moving direction adjusting screw
- ④ Door moving direction adjusting screw
- ⑤ Door closing speed adjusting valve
- ⑥ Door closing speed adjusting valve

Model	Maximum Door		Weight
	(90°) Hold Open	Non-Hold Open	
1051-S	1051	900×2,100	70
1052-S	1052	950×2,100	100
1053-S	1053	1,050×2,400	120



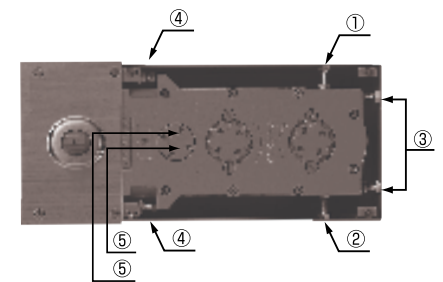
# ST-44 · T-44 ST-45 · T-45 ST-46 · T-46



- ① Door closure position adjusting screw
- ② Door closure position adjusting screw
- ③ Door moving direction adjusting screw
- ④ Door moving direction adjusting screw
- ⑤ Door closing speed adjusting valve

Model		Maximum Door	Weight
(90°) Hold Open	Non-Hold Open	Width×Height (mm)	(kg)
ST-44	T-44	1,050×2,400	200
ST-45	T-45	1,200×2,400	250
ST-46	T-46	1,500×2,700	280

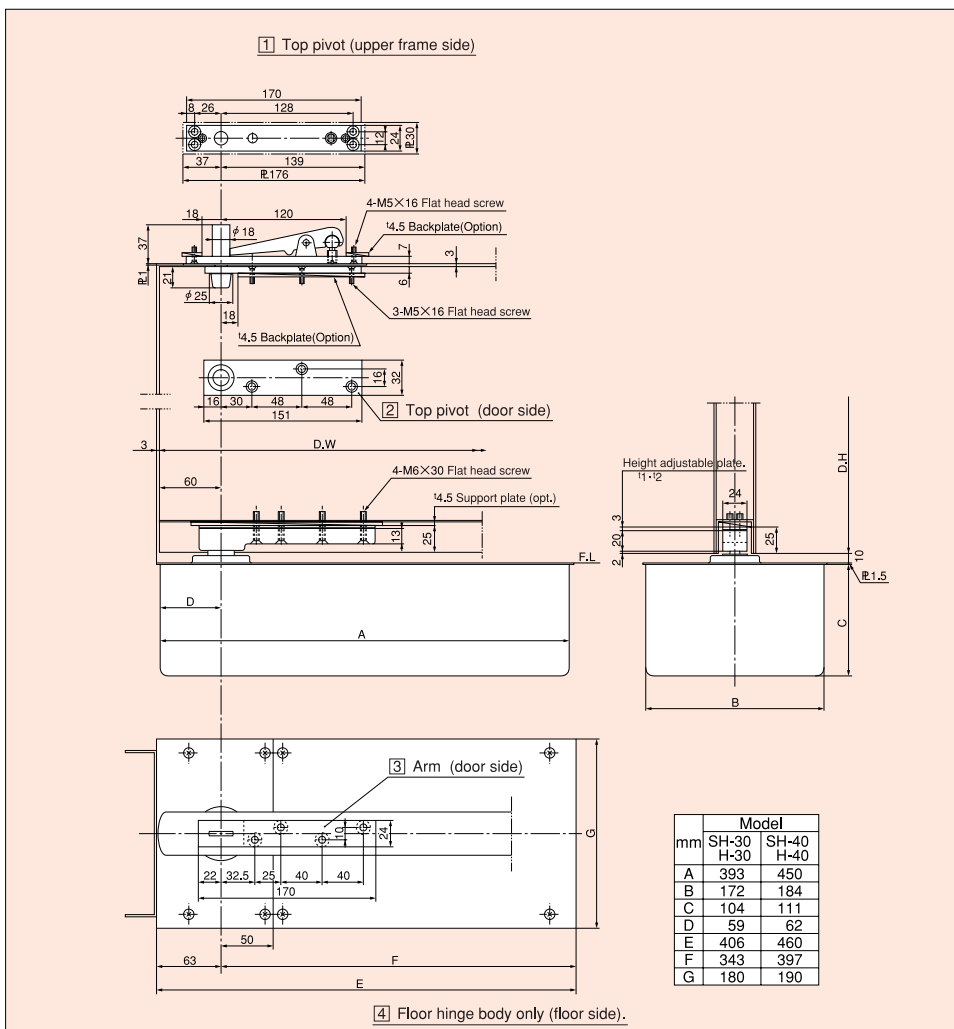
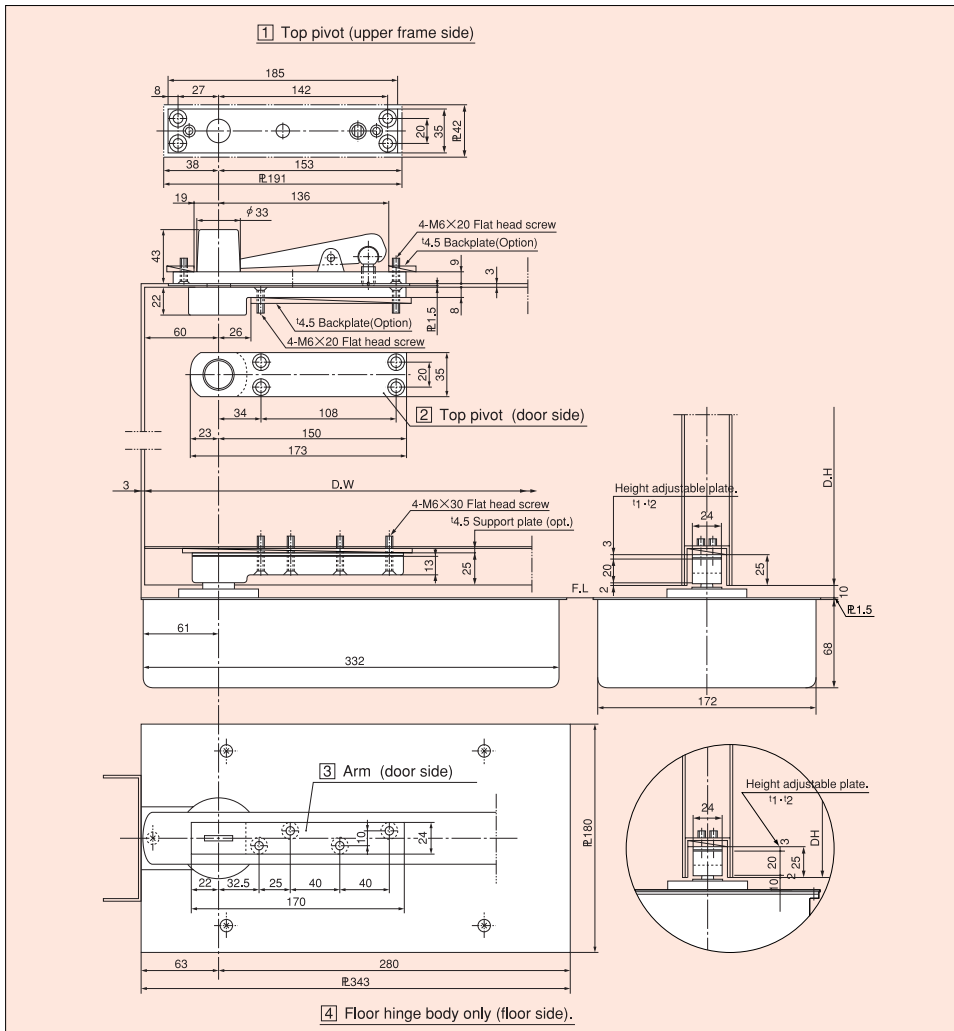
# SH-30 · H-30 SH-40 · H-40



- ① Door closure position adjusting screw
- ② Door closure position adjusting screw
- ③ Door moving direction adjusting screw
- ④ Door moving direction adjusting screw
- ⑤ Door closing speed adjusting valve to be effected after the plug detached.

Model		Maximum Door	Weight
(90°) Hold Open	Non-Hold Open	Width×Height (mm)	(kg)
SH-30	H-30	950×2,100	120
SH-40	H-40	1,050×2,400	185

	Model						
	A	B	C	D	E	F	G
SH-30·H-30	393	172	104	59	406	343	180
SH-40·H-40	450	184	111	62	460	397	190

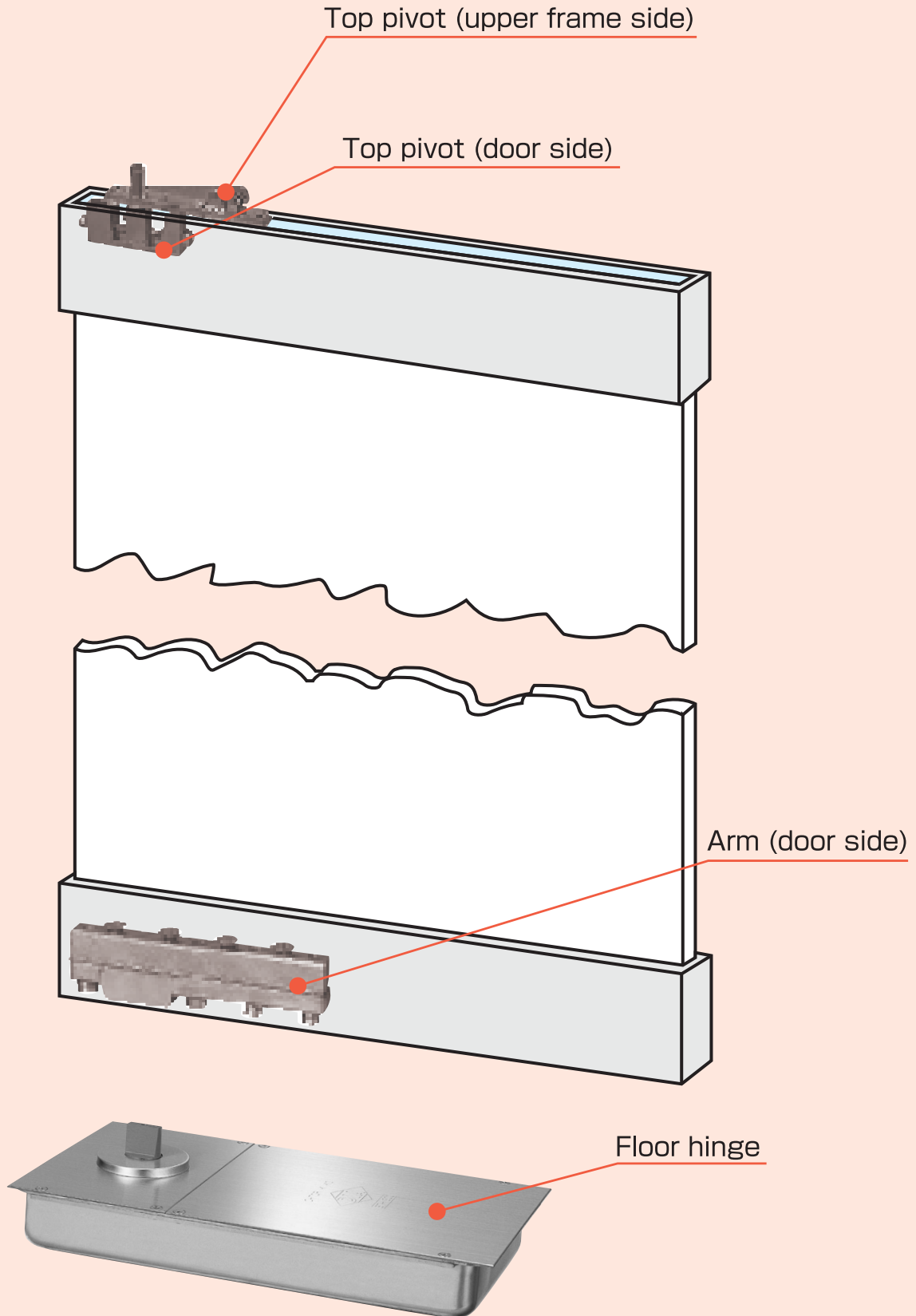




# FLOOR HINGES

## CENTER HUNG Double Action

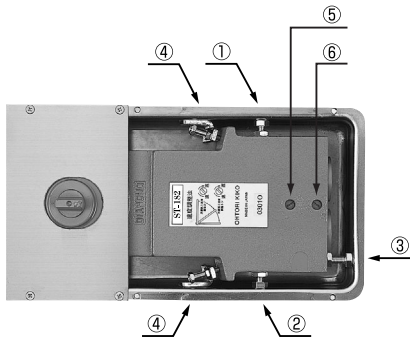
STANDARD SETTING OF DIA FLOOR HINGES FOR TEMPERED GLASS DOORS:



# ST-181·T-181/ST-182·T-182/ST-183·T-183

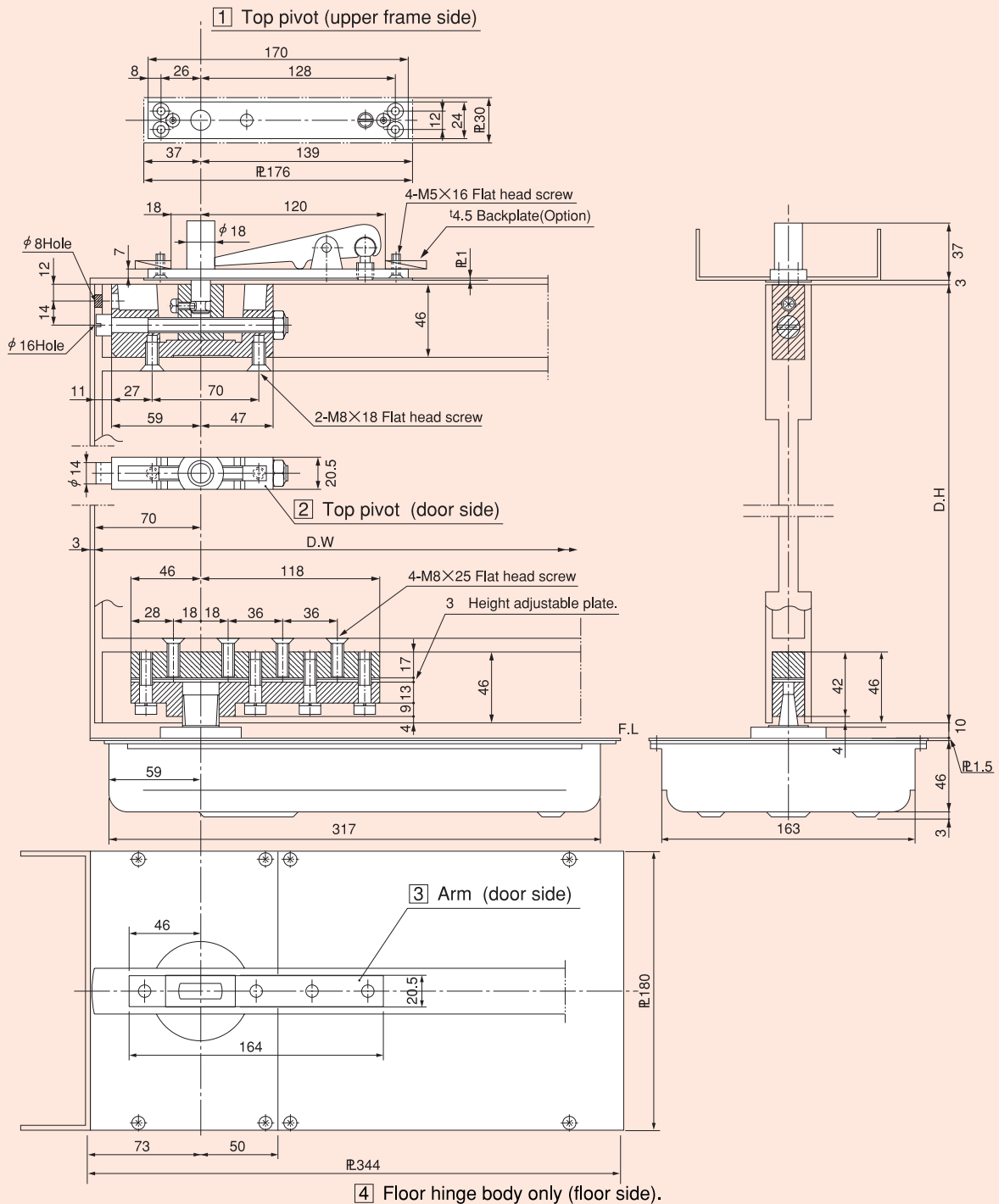
**Thermo Constant All Seasons.**

**No speed adjustment required between (-10°~50°)**

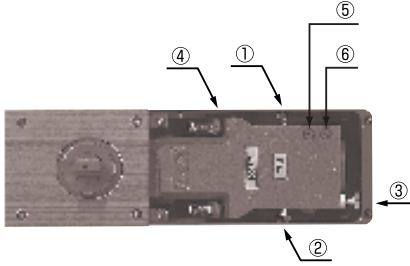


- ① Door closure position adjusting screw
- ② Door closure position adjusting screw
- ③ Door moving direction adjusting screw
- ④ Door moving direction adjusting screw
- ⑤ Door closing speed adjusting valve
- ⑥ Door closing speed adjusting valve

Model		Maximum Door
(90°) Hold Open	Non-Hold Open	Width×Height (mm)
ST-181	T-181	914×2,134
ST-182	T-182	1,067×2,134
ST-183	T-183	1,200×2,134

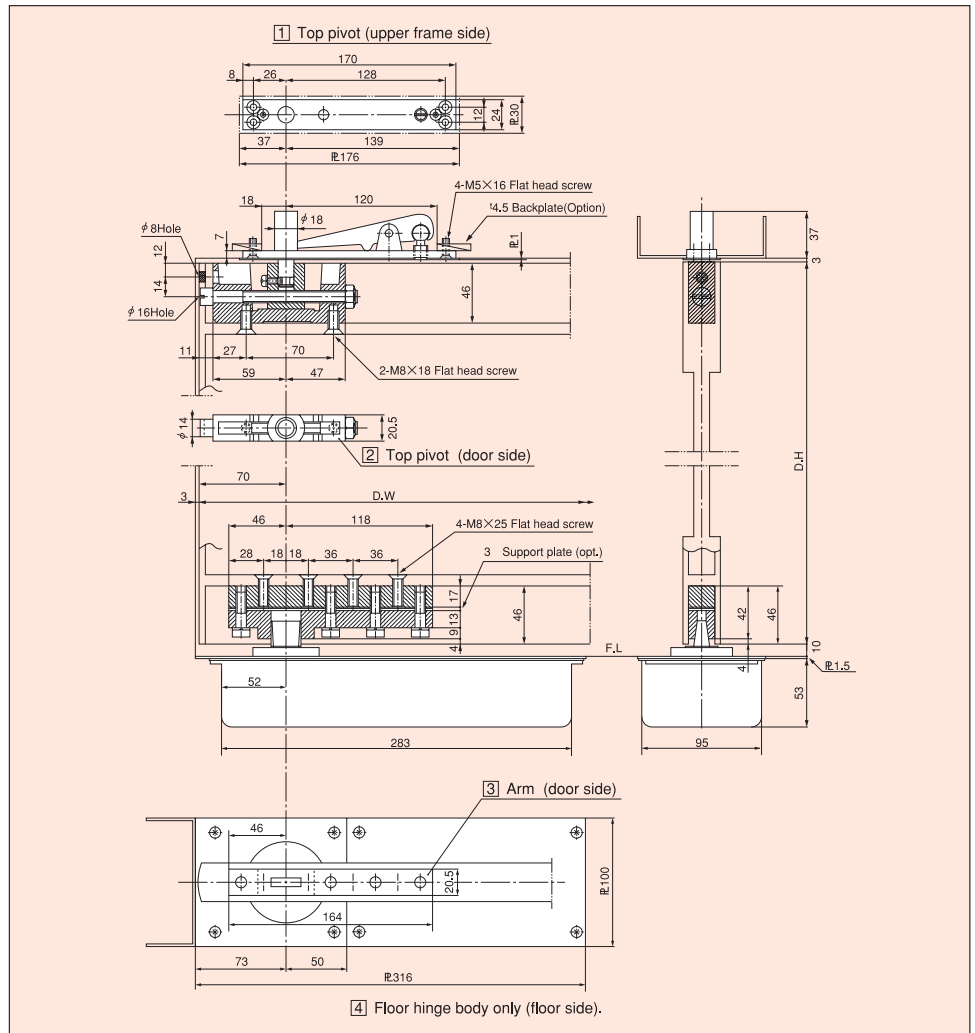


# 1001SG · 1001G 1002SG · 1002G 1003SG · 1003G

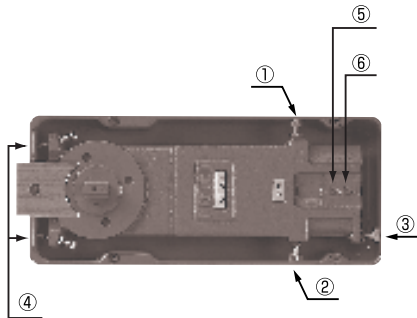


- ① Door closure position adjusting screw
- ② Door closure position adjusting screw
- ③ Door moving direction adjusting screw
- ④ Door moving direction adjusting screw
- ⑤ Door closing speed adjusting valve
- ⑥ Door closing speed adjusting valve

Model		Maximum Door
(90°) Hold Open	Non-Hold Open	Width×Height (mm)
1001SG	1001G	762×2,134
1002SG	1002G	914×2,134
1003SG	1003G	1,067×2,134

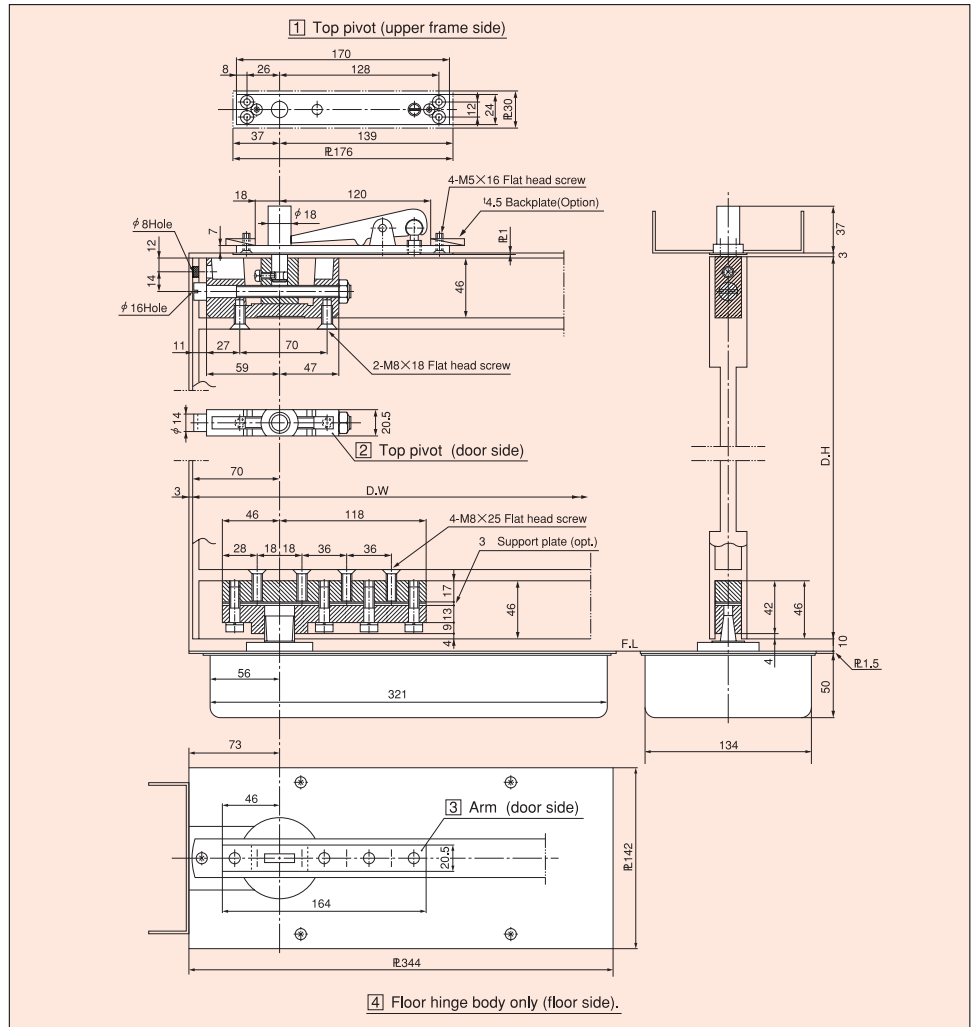


# ST-133 · T-133

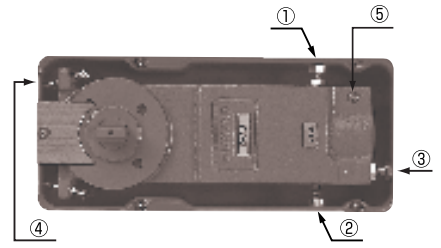


- ① Door closure position adjusting screw
- ② Door closure position adjusting screw
- ③ Door moving direction adjusting screw
- ④ Door moving direction adjusting screw
- ⑤ Door closing speed adjusting valve
- ⑥ Door closing speed adjusting valve

Model		Maximum Door
(90°) Hold Open	Non-Hold Open	Width×Height (mm)
ST-133	T-133	1,067×2,134

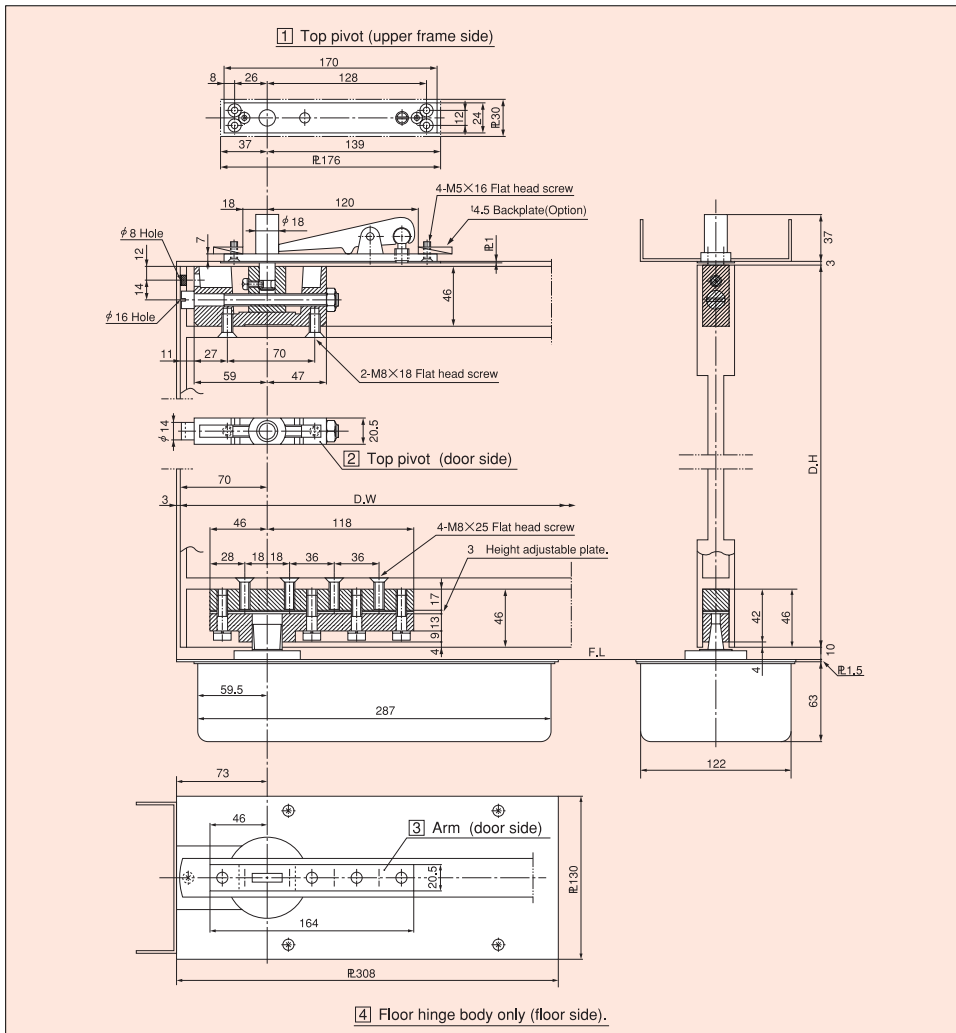


# D-122 · 122

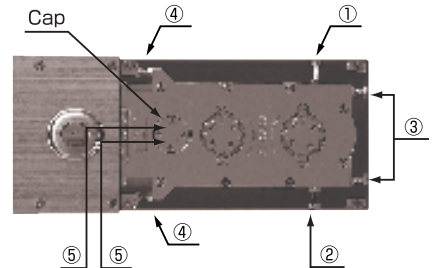


- ① Door closure position adjusting screw
- ② Door closure position adjusting screw
- ③ Door moving direction adjusting screw
- ④ Door moving direction adjusting screw
- ⑤ Door closing speed adjusting valve

Model		Maximum Door
(90°) Hold Open	Non-Hold Open	Width×Height (mm)
D-122	122	762×2,134



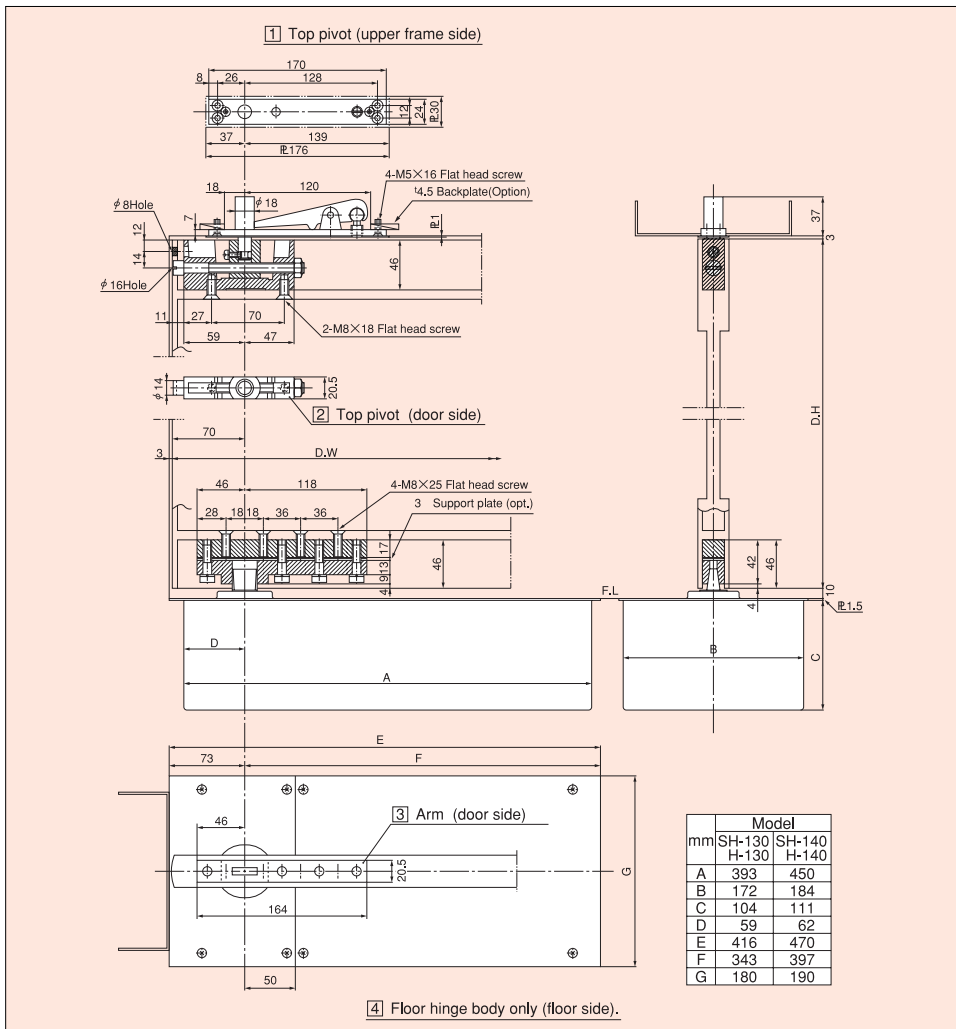
# SH-130 · H-130 SH-140 · H-140



- ① Door closure position adjusting screw
- ② Door closure position adjusting screw
- ③ Door moving direction adjusting screw
- ④ Door moving direction adjusting screw
- ⑤ Door closing speed adjusting valve to be effected after the plug detached.

Model		Maximum Door
(90°) Hold Open	Non-Hold Open	Width×Height (mm)
SH-130	H-130	914×2,134
SH-140	H-140	1,067×2,438

	Model						
	A	B	C	D	E	F	G
SH-130 · H-130	393	172	104	59	416	343	180
SH-140 · H-140	450	184	111	62	470	397	190

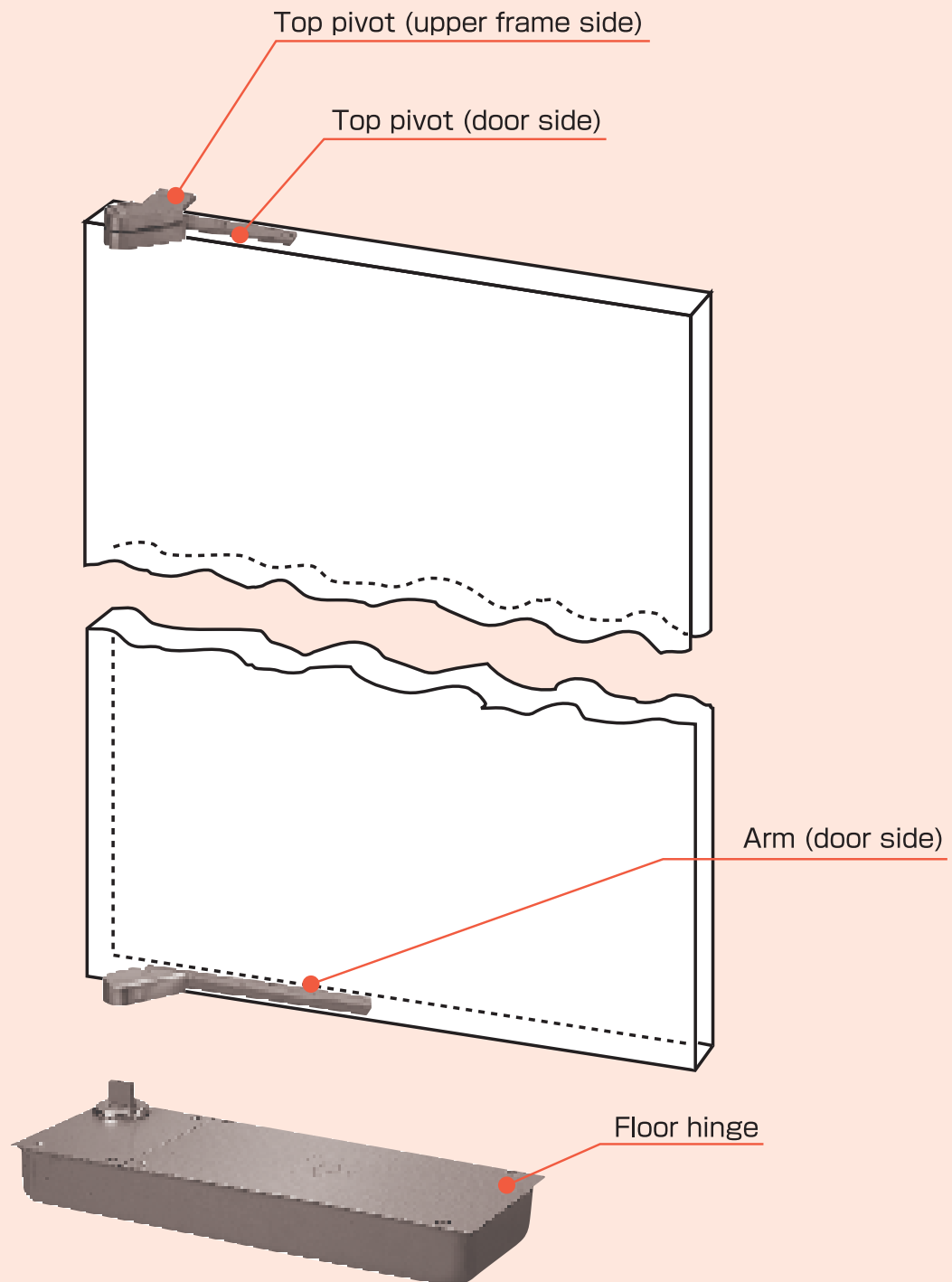




# FLOOR HINGES



## OFFSET HUNG Single Action HO and NHO, double functions in one body.



\*540 series products have NHO and HO devices in one body.

■ For NHO

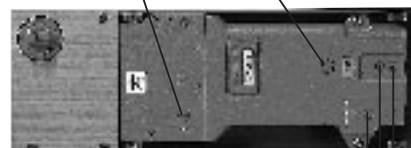
Hold the door open at 30°, and turn the stop screw clockwise until end.

■ For HO

Hold the door open at 30°, and turn the stop screw counter-clockwise until screw head and floor plate surface become flat.

Stop screw

Oil port (Do not touch.)



Speed control valve No.3 (for latching)

Speed control valve No.1

Speed control valve No.2



