



# List of knobs (Knobs for integral locks (UC, G) and cylindrical locks (UH, US, ULW) are key-in-knob types.)

**⚠ Precautions:** Avoid using reinforced wood knobs outdoors. Also, be careful to avoid scratching brass knobs. (For the maintenance methods, refer to P.3.)

**B type**  
Dull stainless steel B11



Bright stainless steel B12



Dull brass B21 **⚠**



Bright brass B22 **⚠**



Reinforced wood BW51 **⚠**  
(mortise locks only)



**Q type**  
Dull stainless steel Q11



Bright stainless steel Q12



Reinforced wood QW51 **⚠**



Antique bronze Q51 **⚠**



**Y type**  
Dull stainless steel Y11



**K type**  
Dull stainless steel K11



**S type**  
Dull stainless steel S11



Bright stainless steel S12



**ORB type**  
Bright stainless steel ORB12



**P type**  
Dull stainless steel P11



**E type**  
Dull stainless steel E11



**F type**  
Dull stainless steel F11



Reinforced wood FW51 **⚠**



**CAP type** (antique locks only)  
Antique brass CAP71 **⚠**



Antique bronze CAP51 **⚠**



(\* 45 knobs are Q, K, E stainless steel types only.) With indicator (UC, G-45)



**Large rose**  
S10 type (100 mmφ), S9 type (90 mmφ)



(AH, AS, HS, AXF mortise locks only)  
(EU series electric locks)

(The large rose is for mortise locks and integral locks only.)

## List of mortise lock knob designs, finishes, roses, and escutcheons

Knob design	Material	Stainless steel			Brass <b>⚠</b>				Mizume cherry reinforced wood <b>⚠</b>		Rose		Escutcheon (AH series only)
		Finish	Dull finish	Bright finish	Antique bronze	Dull finish	Bright finish	Antique brass	Antique bronze	Rose Antique bronze	Rose Dull stainless steel	Standard rose	
<b>Q type</b>		Q11	Q12	Q51	—	—	—	—	QW51	QW	S2 type (75 mmφ)	S10 type (100 mmφ)	S1 type
<b>Y type</b>		Y11	—	—	—	—	—	—	YW51	YW			
<b>K type</b>		K11	—	—	—	—	—	—	KW51	KW			
<b>B type</b>		B11	B12	—	B21	B22	—	—	BW51	BW	S8 type (75 mmφ)	S9 type (90 mmφ)	S1 type (With ORB, P, and S types, a ring is installed on the knob shaft.)
<b>ORB type</b>		ORB11	ORB12	—	—	—	—	—	—	—			
<b>P type</b>		P11	P12	—	—	—	—	—	—	—			
<b>S type</b>		S11	S12	—	—	—	—	—	SW51	SW	N type (65 mmφ)	—	—
<b>N type</b> (G series)		N11	—	—	—	—	—	—	—	—			
<b>E type</b> (Note 2)		E11	—	—	—	—	—	—	—	—			
<b>F type</b> (Note 2)		F11	—	—	—	—	—	—	FW51	—	S5 type (65 mmφ)	—	—
<b>CAP type</b> (antique locks only)		—	—	—	—	—	CAP71	CAP51	—	—	Special rose (65 mmφ)	—	—

Note 1: \* indicates a special specification.

2: E type can be used with UC and US N (5-pin cylinder) and ULW, while F type can be used with US N (5-pin cylinder) and ULW.

**Applications** Offices, storerooms, hotel guest rooms, main entrances, etc.

- Mortise locks **V-AH-5Q11S**
- Anti-panic locks **V-AHP-5Q11(R)**



- Office locks **V-AH-82, 84, 85**  
(Photo shows the inside side of the AH-85.) (Note)



Note: 85 uses a turn-button, while 82 and 84 use push-buttons.

- Hotel locks **V-AH-9Q11(R)**  
(Photo shows the outside side of the AH-9Q11(R).)



Precautions: Do not use with the deadbolt facing down. Doing so may result in operating failure.

Precautions  
Table of contents /  
Product list  
Basic information

Cylinders  
Keying  
systems

Locks

Push-pull  
locks

Lever  
handle  
locks

Mortise  
locks

Integral  
locks  
Cylindrical  
locks

Rim dead  
locks

Dead locks  
Cremon  
locks  
Glass door  
locks

Emergency  
locks  
Cup handle  
locks

Sliding  
door locks

Electric locks  
Security systems

Ten-key  
pads

Key switches  
Interlock /  
emergency  
door  
systems

Hotel card  
locks

Electric  
locks

Electrical  
conductors,  
Control  
boxes

Dimensions

## AH series high class mortise locks for superior security, durability, and operability

### Features

- Superior security and exceptional durability
- AH-82, 85 office locks can lock automatically.
- AHP anti-panic locks are also available.  
When the deadbolt is projected, AHP anti-panic locks can be unlocked and opened by turning the inside knob.
- With AH-68, 8, 9, the outside knob is fixed and the door locks automatically when it is closed.

### Specifications (Door thickness: ## mm or more-less than ## mm)

Model	AH-1,3,5,6,68,78	AHP-5,7,AH-9	AH-82,84,85
Backset	76 mm, 100 mm		
Door thicknesses (Contact GOAL for more information.)	35~50 mm (When an escutcheon is not used) 35~38 / 38~43/ 43~48 / 48~53 mm (S1 escutcheon)	35~50 mm (AHP-5, 7) 36~48 mm (N9 escutcheon) (AH-9) 36~38 / 38~43 / 43~48/ 48~53 mm (S1 escutcheon) (AH-9)	35~37.5 / 37.5~42.5 / 42.5~47.5 / 47.5~50 mm
Cylinder [symbol] (Note)	GP [GP], V18 [V],	GV [GV], 6 pins [P],	7 pins [Z]
Thumbturn	Standard type, P type (R, L) (option)	Standard type, P type (R, L) (option for AHP only)	Standard type, P type (R, L) (option)
Key systems	Various key systems available (MK, GMK, GGMK, CNK, etc.) (V18, GV other than AH-9: Key change systems are available as an option.)(GV: Universal Key System not supported)		
Knob	Q, Y, K, B, S, P, other types (Refer to P36 for details.)		Q, Y, K types only
Escutcheon	S2 rose (standard) (Large S10 rose and S1 escutcheon are also available as options.) (With AH-9, the S1 escutcheon or N9 escutcheon is used.)		S2 only
Hand	Same for right and left, inside and outside	R type (for right-hinged out-swinging door or left- hinged in-swinging door) L type (for left-hinged out-swinging door or right- hinged in-swinging door)	Same for right and left, inside and outside

Note: Production of new master key plans for 6-pin and 7-pin cylinders discontinued as of March 2017.

### Corresponding table (AHP, AH-9 and door)

Lock handing	Illustration	
R type	<Left-hinged, in-swinging> 	<Right-hinged, out-swinging> 
	<Right-hinged, in-swinging> 	<Left-hinged, out-swinging> 

### List of AH, AXF, AS, AHP series mortise lock series models and applications

\* Various cylinders are available (GP, V18, GV, etc.).

When ordering, add the cylinder symbol (GP, V, GV, etc.) to the model, for example V-AH-5Q.

Compatible cylinders and cylinder symbols	Model (☺ is the cylinder symbol.)	(Inside)	Illustration (Illustrations other than 45 show AH.)	(Outside)	Applications
—	<b>AH-1*</b> <b>AXF-1*</b> <b>AS-1*</b>	— Knob		— Knob	Partitions, etc.
—	<b>AH-3*</b> <b>AXF-3*</b> <b>AS-3*</b>	Thumbturn Knob		— Knob	Terrace doors, etc.
(emergency cylinder) (without indicator)	<b>AXF-4*</b> <b>AS-4*</b>	Thumbturn Knob		Emergency unlock device (emergency cylinder) (with indicator) Knob	Toilets, bedrooms, children's rooms, etc.
(emergency cylinder) (with indicator)	<b>AXF-45*</b> <b>AXF-45VF*</b> (large indicator) <b>AS-45*</b> <b>AS-45VF*</b> (large indicator) (* Not present on AH.)	Thumbturn Knob		Emergency unlock device (emergency cylinder) (with indicator) Knob	Toilets, bedrooms, children's rooms, etc.
<b>GP</b> (GP) <b>V</b> (V18) <b>GV</b> (GV) <b>P</b> (6-pin) <b>Z</b> (7-pin) <b>GP</b> (GP) <b>V</b> (V18) <b>GV</b> (GV) <b>P</b> (6-pin) <b>Z</b> (7-pin)	<b>AH-5*</b> <b>AXF-5*</b> <b>AS-5*</b> <b>AHP-5*</b> (Anti-panic locks)	Thumbturn Knob		Cylinder Knob	Service entrances, offices, meeting rooms, home entrances, etc.
<b>GP</b> (GP) <b>V</b> (V18) <b>GV</b> (GV) <b>P</b> (6-pin) <b>Z</b> (7-pin)	<b>AH-6*</b> <b>AXF-6*</b> <b>AS-6*</b>	Cylinder Knob		Cylinder Knob	Connecting doors, machine rooms, storerooms, etc.
<b>GP</b> (GP) <b>V</b> (V18) <b>GV</b> (GV) <b>P</b> (6-pin) <b>Z</b> (7-pin)	<b>AH-68*</b> (Automatic locking locks)	Cylinder Knob		Cylinder Fixed knob	Connecting doors, machine rooms, storerooms, etc.
<b>GP</b> (GP) <b>V</b> (V18) <b>GV</b> (GV) <b>P</b> (6-pin) <b>Z</b> (7-pin)	<b>AH-7*</b> <b>AXF-7*</b> <b>AS-7*</b> <b>AHP-7*</b> (Anti-panic locks)	— Knob		Cylinder Knob	Machine rooms, equipment rooms, inspection ports, storerooms, etc.
<b>GP</b> (GP) <b>V</b> (V18) <b>GV</b> (GV) <b>P</b> (6-pin) <b>Z</b> (7-pin)	<b>AH-8*</b> (Automatic locking locks) (Anti-panic locks)	Thumbturn Knob		Cylinder Fixed knob	Machine rooms, storerooms, hotel guest rooms, etc.
<b>GP</b> (GP) <b>V</b> (V18) <b>GV</b> (GV) <b>P</b> (6-pin) <b>Z</b> (7-pin)	(Office locks) <b>AH-82*</b> (Push-button) <b>AH-84*</b> (Push-button, automatic return) <b>AH-85*</b> (Turn-button)	Thumbturn Knob (button)		Cylinder Knob	Offices, etc.
<b>GP</b> (GP) <b>V</b> (V18) <b>GV</b> (GV) <b>P</b> (6-pin) <b>Z</b> (7-pin)	<b>AH-9*</b> (Hotel locks) (Automatic locking locks) (Anti-panic locks)	Thumbturn Knob		Cylinder Fixed knob	Hotel guest rooms, etc.

# AXF Mortise locks

## AXF series

# AS Mortise locks

## AS series

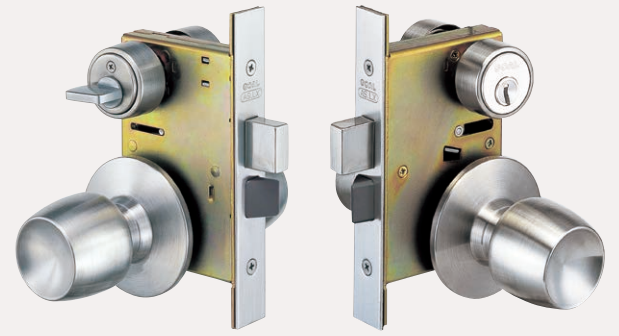
**Applications** Offices, main entrances, home entrances, etc.

**Applications** Offices, main entrances, home entrances, etc.

● **V-AXF-5Q11S**  
(Photo shows a V18 cylinder, Q knob, and dull stainless steel finish.)



● **V-AS-5Q11S**  
(Photo shows a V18 cylinder, Q knob, and dull stainless steel finish.)



● **AXF-45** Emergency cylinder with indicator  
● **AXF-45VF** Emergency cylinder with large indicator  
● **ND cylinder** ND cylinder with indicator



(AXF-4 without an indicator is also available.)

● **AS-45** Emergency cylinder with indicator  
● **AS-45VF** Emergency cylinder with large indicator  
● **ND cylinder** ND cylinder with indicator



(AS-4 without an indicator is also available.)

**High class mortise locks with anti-friction latch bolts that deliver superior security, durability, and operability**

**High class mortise locks with superior security, durability, and operability**

### Features

### Features

- Superior security, and excellent durability and operability
- The latch with an anti-friction latch bolt securely closes the door even when just a small force is applied to the closer.
- Because the lock body dimensions are the same as the LG and LGF lever handle locks, these can also be used as replacements for LG and LGF locks.  
(\* Be aware that the sizes of the notches are different for lever handles and knobs.)
- The thumbturn is an option. The available types include the BF type with superior operability, as well as the TM, TME, TMB, and TMK security thumbturns that are highly resistant to being turned via a hole from outside the door.

- Superior security, and excellent durability and operability
- In the same way as for AXF, various thumbturns are available as options. (Refer to the AXF features at left.)



BF (barrier free) Thumbturn

TM thumbturn

TME security thumbturn

TMB security thumbturn

\* TMK and other security thumbturns are also available. (Refer to P.5 for details.)

### Specifications (Door thickness: ## mm or more~less than ## mm)

Model No.	1, 3, 33, 4, 45, 5, 6, 7	
Model	<b>AXF</b>	<b>AS</b>
Backset	64 mm, 76 mm	
Door thicknesses (Contact GOAL for more information.)	29-33 / 33-43 / 43-53 mm (However, when a P or S type or a cup handle is used, the minimum is 33 mm.)	29-33 / 33-43 / 43-53 mm
Cylinder [symbol] (Note)	GP [GP], V18 [V], GV [GV], 6 pins [P], 7 pins [Z]	
Thumbturn	Standard type, BF, TM, TME, TMB, TMK, other types	
Key systems	Various key systems available (MK, GMK, GGK, CNK, etc.) (V18, GV: Optional key change system available) (GV: Optional Universal Key System (UKS2) available)	

Knob	Q, Y, K, B, P, S types, etc. (Refer to P.36 for details.) (Cup handles can also be used. Refer to P.56 for details.)
Rose	S2 type (standard) (Large S10 rose is also available as an option. Refer to P.36.)
Hand	Same for right and left, inside and outside

Note: Production of new master key plans for 6-pin and 7-pin cylinders discontinued as of March 2017.

Information

Precautions  
Table of contents /  
Product list  
Basic information

Cylinders  
Keying  
systems

Locks

Push-pull  
locks

Lever  
handle  
locks

Mortise  
locks

Integral  
locks  
Cylindrical  
locks

Rim dead  
locks

Dead locks  
Cremon  
locks  
Glass door  
locks

Emergency  
locks  
Cup handle  
locks

Sliding  
door locks

Electric locks  
Security systems

Ten-key  
pads

Key switches  
Interlock /  
emergency  
door  
systems

Hotel card  
locks

Electric  
locks

Electrical  
conductors,  
Control  
boxes

Dimensions

**HS, HSP  
HST, HSTP**

**Mortise locks HS, anti-panic locks HSP series  
Automatic locking locks HST, anti-panic type automatic locking locks HSTP series**

**Applications** Shared entrances, offices, service entrances, etc.

- **V-HS-5Q11S**  
(Photo shows a V18 cylinder, Q knob, and dull stainless steel finish.)



**Precautions:** The appearance of the HSP, HST, and HSTP is the same as HS. The HSP and HSTP anti-panic locks have lock handing. Specify L type or R type according to the direction (hand) of the door.

**HS features**

- Can be locked and unlocked using the key or thumbturn.
- The door locks when the door is closed after the thumbturn (or key) was turned in the lock direction. (Automatic locking function)
- When the lock is locked, the inside and outside knobs are fixed.

**HSP (anti-panic locks) features**

- The HS series includes an anti-panic function.
  - The inside knob can be operated at all times, and even when the lock is locked, the door can be unlocked and opened by turning the knob.
- (When the lock was unlocked using the inside knob, the lock from the door outside remains locked.)

**HST (automatic locking locks), HSTP (anti-panic type automatic locking locks) features**

- Locks automatically when the door is closed.
- It can be unlocked using the key or thumbturn. After unlocking using the key or thumbturn, when the knob is turned and the latch is withdrawn, the lock becomes ready for automatic locking again.
- When the HST is locked, the inside and outside knobs are fixed.
- The HSTP is equipped with an anti-panic function which allows the door to be unlocked and opened by turning the inside knob even when the lock is locked.

**Corresponding table (HSP, HSTP and door)**

Lock handing	Illustration	
R type	<Right-hinged, out-swinging> 	<Left-hinged, in-swinging> 
	<Left-hinged, out-swinging> 	<Right-hinged, in-swinging> 

**Specifications (Door thickness: ## mm or more-less than ## mm)**

Model	HS, HST-3, 5, 6, 7*	HSP-3, 5, 6, 7*, HSTP-7*
Backset	76 mm	
Door thicknesses (Contact GOAL for more information.)	29~33 / 33~43 / 43~53 mm (However for a P or S type, the minimum is 33 mm.)	
Gap (door and jamb)	6 mm or less	
Cylinder [symbol] (Note)	GP [GP], V18 [V], GV [GV], 6 pins [P], 7 pins [Z]	
Key systems	Various key systems available (MK, GMK, GGMK, CNK, etc.) (V18, GV: Optional key change system available) (GV: Optional Universal Key System (UKS2) available)	
Knob	Q, Y, K, B, P, S types, etc. (Refer to P.36 for details.)	
Rose	S2 type (standard specifications)	
Hand	Same for right and left, inside and outside	R type (for right-hinged out-swinging door or left-hinged in-swinging door) L type (for left-hinged out-swinging door or right-hinged in-swinging door)

**Note:** Production of new master key plans for 6-pin and 7-pin cylinders discontinued as of March 2017.

**HS, HSP, HST, HSTP series models and applications**

Compatible cylinders and cylinder symbols	Model	(Inside)	Illustration	(Outside)	Applications	
—	<b>HS HSP -3*</b> <b>HST</b>	Thumbturn		—	Terrace doors, etc.	
		Knob		Knob		
<b>GP</b> (GP) <b>V</b> (V18) <b>GV</b> (GV) <b>P</b> (6-pin) <b>Z</b> (7-pin)	<b>HS HSP -5*</b> <b>HST</b>	Thumbturn		Cylinder	Common entrances, service entrances, offices, meeting rooms, etc.	
		Knob		Knob		
	<b>GP</b> (GP) <b>V</b> (V18) <b>GV</b> (GV) <b>P</b> (6-pin) <b>Z</b> (7-pin)	<b>HS HSP -6*</b> <b>HST</b>	Cylinder		Cylinder	Common entrances, offices, meeting rooms, etc.
			Knob		Knob	
<b>GP</b> (GP) <b>V</b> (V18) <b>GV</b> (GV) <b>P</b> (6-pin) <b>Z</b> (7-pin)	<b>HS HSP -7*</b> <b>HST HSTP</b>	—		Cylinder	Common entrances, office entrances, service entrances and storerooms, machine rooms, etc.	
		Knob		Knob		

Information

Precautions  
Table of contents /  
Product list  
Basic information

Cylinders  
Keying  
systems

Locks

Push-pull  
locks

Lever  
handle  
locks

Mortise  
locks

Integral  
locks  
Cylindrical  
locks

Rim dead  
locks

Dead locks  
Cremon  
locks  
Glass door  
locks

Emergency  
locks  
Cup handle  
locks

Sliding  
door locks

Electric locks  
Security systems

Ten-key  
pads

Key switches  
Interlock /  
emergency  
door  
systems

Hotel card  
locks

Electric  
locks

Electrical  
conductors,  
Control  
boxes

Dimensions

## Applications Offices, reception rooms, etc.

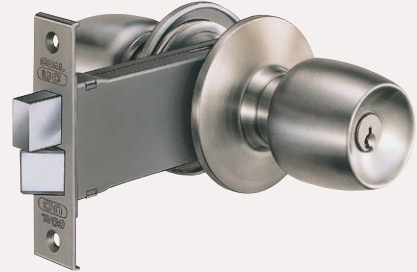
### ● P-UC-5Q11

(Photo shows a 6-pin cylinder, Q type knob, and dull stainless steel finish.)



### ● P-UC-5Q11 (backset: 100 mm)

(Photo shows a 6-pin cylinder, Q type knob, and dull stainless steel finish.)



### ● UC-45Q lock with indicator and emergency unlock device

(The knob shape is limited to the Q type [11S, 12S] shown in the photo and the K or E type [11S] finish.)



### ● 6-pin and 7-pin cylinders

(\* Q, Y, K, B type knobs. GP, V, and GV cylinders are also available for Q and B knobs.)



### ● 5-pin cylinders

For [cylinder symbol: N] (Knob is E type only in 5-pin cylinders.)



⚠ Precautions: Be aware that depending on the frame conditions, when the backset is 57 mm, there may be the risk of fingers being jammed when the knob is turned.

## Key-in-knob type locks equipped with deadbolts

### Features

- Superior durability and smooth operation
- The direction (hand) can also be easily changed to prevent the cylinder from facing the wrong way.

### Specifications (Door thickness: ## mm or more~less than ## mm)

Model	1, 3, 45, 5, 6, 7	
Backset	57 mm ⚠, 64 mm, 83 mm, 100 mm	
Door thicknesses (Contact GOAL for more information.)	25~33 / 33~43 / 43~53 mm	
Cylinder [symbol]	GP [GP], V18 [V], GV [GV]	6 pins [P], 7 pins [Z]
Knob	Q, B types	Q, Y, K, B types
Key systems	Various key systems available (MK, GMK, GGMK, CNK, etc.) (V18, GV: Optional key change system available) (GV: Universal Key System not supported)	

Note 1: The UC-45 knob type is limited to Q type (11S, 12S) and K, E types (11S) only.  
2: 5-pin cylinders are also supported. The knob is limited to E type only.  
3: Production of new master key plans for 6-pin and 7-pin cylinders discontinued as of March 2017.

### List of integral lock UC and G series models and applications

\* Various cylinders including GP, V18, and GV are available.  
When ordering, add the cylinder symbol (GP, V, GV, etc.) to the model, for example V-UC-5Q11.

Compatible cylinders and cylinder symbols	Model	(Inside)	Illustration (The illustration shows UC with Q type knob.)	(Outside)
—	UC-1* G-1*	Knob		Knob
—	UC-3* G-3*	Knob (thumbturn)		Knob
Emergency unlock device (emergency cylinder) (with indicator)	UC-45Q* G-45Q*	Knob (thumbturn)		Knob (emergency unlock device)
GP (GP) V18 (V) GV (GV) P (6-pin) Z (7-pin)	UC-5* G-5*	Knob (thumbturn)		Knob (cylinder)
V18 (V) GV (GV) P (6-pin) Z (7-pin)	UC-6* G-6*	Knob (cylinder)		Knob (cylinder)
GP (GP) V18 (V) GV (GV) P (6-pin) Z (7-pin)	UC-7* G-7*	Knob (There is no thumbturn.)		Knob (cylinder)

**Applications** Offices, reception rooms, etc.

- **P-G-5Q11**  
(Photo shows a 6-pin cylinder, Q type knob, and dull stainless steel finish.)



## Extremely compact lock body The ideal integral locks for aluminum sash with a horizontal narrow frame.

### Features

- Extremely compact lock body
- Smooth operation and superior durability
- The knob is fixed in place when locked.
- The direction (hand) can also be changed easily.

### Specifications (Door thickness: ## mm or more~less than ## mm)

Model	1, 3, 45, 5, 6, 7	5	
Backset	64 mm, 100 mm		
Knob	(Note 1) Q, Y, K, B types	E type	N type
Cylinder [symbol] (Note 2)	GP [GP], V18 [V], GV [GV] (Note 3) 6 pins [P], 7 pins [Z]	5 pins [N]	SP 5 pins [S]
Key systems	Various key systems available (MK, GMK, GGMK, CNK, etc.)		MK and other key systems are not supported.
Door thicknesses (Contact GOAL for more information.)	25~33 / 33~43 / 43~53 / 53~63 mm		22~34 mm 30~42 mm

Note 1: The G-45 knob is limited to Q type (11S, 12S), and K type (11S) only.

Note 2: Production of new master key plans for 5-pin, 6-pin and 7-pin cylinders discontinued as of March 2017.

Note 3: Only Q11 and B11 knobs can be installed with GP, V18, and GV cylinders.

Information

Precautions  
Table of contents /  
Product list  
Basic information

Cylinders  
Keying  
systems

Locks

Push-pull  
locks

Lever  
handle  
locks

Mortise  
locks

Integral  
locks  
Cylindrical  
locks

Rim dead  
locks

Dead locks  
Cremon  
locks  
Glass door  
locks

Emergency  
locks  
Cup handle  
locks

Sliding  
door locks

Electric locks  
Security systems

Ten-key  
pads

Key switches  
Interlock /  
emergency  
door  
systems

Hotel card  
locks

Electric  
locks

Electrical  
conductors,  
Control  
boxes

Dimensions



# UH Uni-Locks (cylindrical locks) UH series

## Applications Offices, storerooms, etc.

● **P-UH-5Q11**  
(Photo shows a 6-pin cylinder, Q type knob, and dull stainless steel finish.)

● **P-UH-9Q(11) hotel lock**  
(Photo shows a 6-pin cylinder and Q type knob with backset 60 mm.)



⚠ **Precautions** 1. With a backset of 60 mm, there is the risk of fingers being jammed when the knob is turned.  
2. UH-5 cannot be locked with the key from the outside of the door.

**These are the highest grade of cylindrical locks. Certified under the U.S. UL fire resistance standard. Hotel locks are also available.**

### Features of the UH series

- This product has been certified under the U.S. UL fire resistance standard. Has been proven to deliver superior fire resistant strength and durability. (Certified under the UL fire resistance standard in 1972.)
- Good operability. Can lock automatically for greater convenience.

### Features of the UH-9 (hotel locks)

- The outside knob is fixed and locks automatically when the door is closed.
- Equipped with a shutout device that protects customer privacy. When the door is closed, the outside knob locks automatically. When the button on the inside is pressed, the lock is shut out and cannot be opened with the maid key or guest key.
- Equipped with a special hotel key system.
- Includes an indicator showing whether or not the room is occupied. When the lock is shut out from the inside, the indicator on the outside cylinder projects, indicating that the room is occupied.

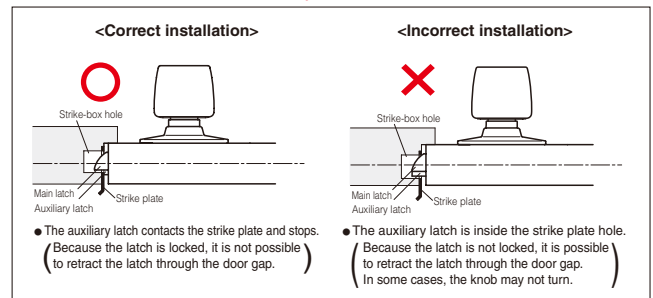
### Specifications (Door thickness: ## mm or more~## mm or less)

Model	1, 3, 4, 5, 6, 7, 8	9
Backset	60 mm ⚠, 70 mm, 89 mm, 127 mm	
Door thicknesses (Note 1)	30~34 / 34~50 / 50~60 mm	34~50 (extra thick 50~60 mm)
Gap (door and jamb)	6 mm or less	
Cylinder [symbol] (Note 2)	6 pins [P], 7 pins [Z]	
Key systems	Various key systems available (MK, GMK, GGMM, CNK, etc.)	Special hotel key systems. Various key systems are available.
Knob	Q, Y, K, B types (Refer to P.36 for details.)	
Hand	Same for right and left, inside and outside	

Note 1: For door thickness of 30~34 mm and 50~60 mm, special specifications are required. Please contact us.  
2: Production of new master key plans for 6-pin and 7-pin cylinders discontinued as of March 2017.

### <Precautions for installation>

Be sure to install so that the auxiliary latch does not fit into the strike-box hole.



### List of UH series cylindrical lock (6-pin, 7-pin cylinders) models and applications

\* 6-pin cylinders and 7-pin cylinders are available. When ordering, add the cylinder symbol (P, Z) to the model, for example P-UH-5Q.

Compatible cylinders and cylinder symbols	Model (Note)	(Inside)	Illustration	(Outside)	Applications
—	<b>UH-1*</b>	Knob		Knob	Partitions, etc.
—	<b>UH-3*</b>	Knob (push-button)		Knob	Terrace doors, etc.
Emergency unlock device (emergency cylinder)	<b>UH-4*</b>	Knob (push-button)		Knob Emergency unlock device (emergency cylinder)	Toilets, restrooms, etc.
P (6-pin) Z (7-pin)	<b>UH-5*</b>	Knob (universal button)		Knob (cylinder)	Offices, meeting rooms, etc.
P (6-pin) Z (7-pin)	<b>UH-6*</b>	Knob (cylinder)		Knob (cylinder)	Connecting doors, passage doors, etc.
P (6-pin) Z (7-pin)	<b>UH-7*</b>	Knob		Knob (cylinder)	Machine rooms, equipment rooms, inspection ports, storerooms, etc.
P (6-pin) Z (7-pin)	<b>UH-8*</b>	Knob		Fixed knob (cylinder)	Storerooms, machine rooms, hotel guest rooms, etc.
P (6-pin) Z (7-pin)	<b>UH-9*</b>	Knob (shutout button)		Fixed knob (cylinder) (indicator device)	Hotel guest rooms, etc.

Note: \* indicates the knob design symbol (Q, Y, K, B, etc.).

Information

Precautions  
Table of contents /  
Product list  
Basic information

Cylinders  
Keying  
systems

Locks

Push-pull  
locks

Lever  
handle  
locks

Mortise  
locks

Integral  
locks  
Cylindrical  
locks

Rim dead  
locks

Dead locks  
Cremon  
locks  
Glass door  
locks

Emergency  
locks  
Cup handle  
locks

Sliding  
door locks

Electric locks  
Security systems

Ten-key  
pads

Key switches  
Interlock /  
emergency  
door  
systems

Hotel card  
locks

Electric  
locks

Electrical  
conductors,  
Control  
boxes

Dimensions

# US

## Uni-Locks (cylindrical locks) US series

**Applications** Offices, meeting rooms, reception rooms, toilets, etc.

### ● P-US-5Q11

(backset: 50 mm, 57 mm, 60 mm, 64 mm, 70 mm, 89 mm, 127 mm)  
(Photo shows a 6-pin cylinder, Q type knob, and dull stainless steel finish.)



⚠ With a backset of 60 mm or less, there is the risk of fingers being jammed when the knob is turned.  
US-5 cannot be locked with the key from the outside of the door.

## Standard Uni-Locks (cylindrical locks) with superior operability, durability, and ease of installation

### Features

- Good operability. Can lock automatically for greater convenience.

### Specifications (Door thickness: ## mm or more~## mm or less)

Backset ⚠	50 mm, 57 mm, 60 mm, 64 mm, 70 mm, 89 mm, 127 mm
Door thicknesses	25-30 / 30-45 / 45-60 mm
Gap (door and jamb)	6 mm or less
Knob design (Note 1)	Q, Y, K, B types (6-pin, 7-pin cylinders) E, F types (5-pin cylinders)
Cylinder [symbol] (Note 2)	6 pins [P], 7 pins [Z] (Q, Y, K, B type knobs) 5 pins cylinder [N] (E, F type knobs)
Key systems	Various key systems available (MK, GMK, GGMK, CNK, etc.)

Note 1: A common body is used for the Q, Y, and K type knobs, but the B type knob body is only for the B type. (However, the body for model US-1 (passage latch) is the same for all knob types.)

2: Production of new master key plans for 5-pin, 6-pin and 7-pin cylinders discontinued as of March 2017.

- List of US series cylindrical lock (5-pin, 6-pin, 7-pin cylinders) models and applications  
5-pin, 6-pin, and 7-pin cylinders are available. When ordering, add the cylinder symbol (P, Z, N) to the model, for example P-UH-5Q.

Compatible cylinders and cylinder symbols	Model (Note)	Knob shape	(Inside)	Illustration	(Outside)	Applications
—	US-1*	Q Y K B E F	Knob		Knob	Partitions, etc.
Emergency unlock device (emergency cylinder)	US-4*	Q Y K B E F	Knob (push-button)	Emergency unlock device (emergency cylinder) 	Knob (emergency cylinder)	Toilets, restrooms, etc.
P (6-pin)	US-5*	Q Y K B E F	Knob (universal button)		Knob (emergency cylinder)	Offices, meeting rooms, etc.
Z (7-pin)						Offices, meeting rooms, etc.
N (5-pin)						Offices, meeting rooms, etc.
P (6-pin)	US-6*	Q Y K B E F	Knob (cylinder)		Knob (cylinder)	Connecting doors, passage doors, etc.
Z (7-pin)						Connecting doors, passage doors, etc.
N (5-pin)						Connecting doors, passage doors, etc.
P (6-pin)	US-7*	Q Y K B E F	Knob		Knob (cylinder)	Machine rooms, equipment rooms, inspection ports, storerooms, etc.
Z (7-pin)						Machine rooms, equipment rooms, inspection ports, storerooms, etc.
N (5-pin)						Machine rooms, equipment rooms, inspection ports, storerooms, etc.
P (6-pin)	US-8*	Q Y K B E F	Knob		Knob (fixed) (cylinder)	Storerooms, machine rooms, hotel guest rooms, etc.
Z (7-pin)						Storerooms, machine rooms, hotel guest rooms, etc.
N (5-pin)						Storerooms, machine rooms, hotel guest rooms, etc.

Note: \* indicates the knob design symbol (Q, Y, K, B, etc.).

# ULW

## Uni-Locks (cylindrical locks) ULW series

**Applications** Offices, toilets, etc.

### ● ULW-5E11

(backset: 50 mm, 57 mm, 60 mm, 64 mm, 70 mm, 89 mm, 127 mm)  
(Photo shows wafer cylinder, E type knob, and dull stainless steel finish.)



### ● ULW-4EBL

(backset: 60 mm, 64 mm, 89 mm)  
(\* In an emergency, the lock can be removed from the outside of the door.)



⚠ With a backset of 60 mm or less, there is the risk of fingers being jammed when the knob is turned.  
ULW-5 cannot be locked with the key from the outside of the door.

## Popular Uni-Locks (cylindrical locks) with superior operability, durability, and ease of installation

### Features

- Perfect for in-room partitions and other light doors.
- Superior durability
- Special construction systems for in-room partition locks are also available.
- There is also a BL type <ULW-4, 49(E, F)BL> featuring mounting screws that are exposed on the outside of the room. In an emergency, the lock can be removed from the outside of the door.

### Specifications (Door thickness: ## mm or more~## mm or less)

Backset ⚠	50 mm, 57 mm, 60 mm, 64 mm, 70 mm, 89 mm, 127 mm
Door thicknesses	25-30 mm (for thin doors), 27-37 mm (for standard doors)
Gap (door and jamb)	6 mm or less
Knob design	E type, F type Note:F type knob for ULW has been discontinued.
Cylinder	Wafer cylinder (model ULW-5 only)
Key systems	MK, keyed alike, and other key systems are not supported.

\* In the case of the ULW-1,4,49(E, F)BL type, the available backsets are 60, 64, and 89 mm only, the 27~37 mm door thickness installation method is outside installation, and the latch is made of plastic.

- List of ULW series cylindrical lock models and applications

The ULW series cylinders are wafer cylinders only.

Model (Note 1)	(Inside)	Illustration	(Outside)	Applications
ULW-1*	Knob		Knob	Partitions, etc.
ULW-1*BL (Note 2)				
ULW-4*	Knob (push-button)	Emergency unlock device (emergency cylinder) 	Knob (emergency cylinder)	Toilets, restrooms, etc.
ULW-4*BL (Note 2)	Knob (push-button)	Emergency unlock device (emergency cylinder) 	Knob (emergency cylinder)	Toilets, restrooms, etc.
ULW-49*	During construction	Knob (universal button) 	Knob (cylinder)	Toilets, restrooms, etc.
	After completion	Knob (universal button) 	Knob (emergency cylinder)	
ULW-49*BL	Knob (universal button)	Chip key Emergency unlock device (emergency cylinder) 	Knob (emergency cylinder)	Toilets, restrooms, etc.
ULW-5*	Knob (universal button)		Knob (cylinder)	Meeting rooms, reception rooms, etc.

Note 1: \* indicates the knob design symbol E or F. When ordering, specify as, for example, ULW-5E.  
2: The latch and strike plate specifications are different for the BL type. For model ULW-49, the cylinder and key specifications are also different.

Information

Precautions  
Table of contents /  
Product list  
Basic information

Cylinders  
Keying  
systems

Locks

Push-pull  
locks

Lever  
handle  
locks

Mortise  
locks

Integral  
locks  
Cylindrical  
locks

Rim dead  
locks

Dead locks  
Cremon  
locks  
Glass door  
locks

Emergency  
locks  
Cup handle  
locks

Sliding  
door locks

Electric locks  
Security systems

Ten-key  
pads

Key switches  
Interlock /  
emergency  
door  
systems

Hotel card  
locks

Electric  
locks

Electrical  
conductors,  
Control  
boxes

Dimensions



# AHC, ASC AXFC, HSC Cup handle locks

## AHC, AXFC, ASC, HSC series

**Applications** Storerooms, gymnasiums, shutters, side doors, trunk rooms, etc.

**• V-AHC-5**

(Photo shows an AHC, V18 cylinder, model AHC-5 with backset 76 mm.)



**• V-ASC-5**



**• V-AXFC-5**



Cup handles for preventing finger jamming are also available. (CL cup handles)



**• V-HSC-5** (backset: 76 mm)  
(Photo shows an HSC, V18 cylinder, model HSC-5.)



**⚠ Precautions:** Do not use an AHC with the deadbolt facing down.

## Cup handle locks for AH, AXF, AS, and HS mortise locks, and for automatic locking HST

### Specifications (Door thickness: ## mm or more~less than ## mm)

Model	AHC, AHCL	AXFC, AXFCL	ASC, ASCL	HSC, HSTC (automatic locking locks)
Backset	76 mm, 100 mm	64 mm, 76 mm	64 mm, 76 mm	76 mm
Door thicknesses (Contact GOAL for more information.)	35~43 / 43~50 mm	33~43 / 43~53 mm	(Cup handle on both sides) 31~33 / 33~38 / 38~43 / 43~48 / 48~53 mm (Cup handle on one side) 31~33 / 33~43 / 43~53 mm	33~43 / 43~53 mm
Cylinder [symbol](Note)	GP [GP], V18 [V], GV [GV], 6 pins [P], 7 pins [Z]			
Key systems	Various key systems available (MK, GMK, GGMK, CNK, etc.) (V18, GV: Optional key change system available) (GV: UKS2 not supported) (GV: Optional Universal Key System (UKS2) available)			
Knobs	Q, Y, K, S, B, P types, etc.			
Model	1, 3, 5, 6, 7	1, 3, 4, 45, 5, 6, 7		3,5,6,7

Note: Production of new master key plans for 6-pin and 7-pin cylinders discontinued as of March 2017.

### List of AHC, AHCL, AXFC, AXFCL, ASC, ASCL, HSC, HSTC series models

When ordering, add the cylinder symbol (GP, V, GV, etc.) to the model, for example V-AHC-5 or V-AHC-5B.

Compatible cylinders and cylinder symbols	Model	Illustration (Cup handle on both sides)		Illustration (Cup handle on one side) (Note 1, 2)		Compatible cylinders and cylinder symbols	Model	Illustration (Cup handle on both sides)		Illustration (Cup handle on one side) (Note 1, 2)		
		Inside	Outside	Inside	Outside			Inside	Outside	Inside	Outside	
—	<b>AHC,AHCL AXFC,AXFCL -1 ASC,ASCL</b> (Cup handle on both sides) * One side: -1*					<b>GP</b> (GP)	<b>AHC,AHCL AXFC,AXFCL -5 ASC,ASCL HSC,HSTC</b> (Cup handle on both sides) * One side: -5*					
												<b>V</b> (V18)
												<b>GV</b> (GV)
												<b>P</b> (6-pin)
—	<b>AHC,AHCL AXFC,AXFCL -3 ASC,ASCL HSC,HSTC</b> (Cup handle on both sides) * One side: -3*					<b>GP</b> (GP)	<b>AHC,AHCL AXFC,AXFCL -6 ASC,ASCL HSC,HSTC</b> (Cup handle on both sides) * One side: -6*					
												<b>V</b> (V18)
												<b>GV</b> (GV)
												<b>P</b> (6-pin)
(Emergency cylinder) (no indicator)	<b>AXFC,AXFCL -4 ASC,ASCL</b> (Cup handle on both sides) * One side: -4*					<b>GP</b> (GP)	<b>AHC,AHCL AXFC,AXFCL -7 ASC,ASCL HSC,HSTC</b> (Cup handle on both sides) * One side: -7*					
												<b>V</b> (V18)
												<b>GV</b> (GV)
												<b>P</b> (6-pin)
(Emergency cylinder) (with indicator) (45VF emergency cylinders with large indicators are also available.)	<b>AXFC,AXFCL -45 ASC,ASCL</b> (Cup handle on both sides) * One side: -45*					Cup handle						

Note 1: \* indicates the knob design (Q, Y, K, S, B, etc.) for cup handle on one side.

Note 2: With standard specifications when there is a cup handle on one side, the cup handle is on the outside. Please indicate your request if you would like the cup handle on the inside.

**Applications** Fire doors, shutters, side doors, partitions, etc.

• **UCC-1**

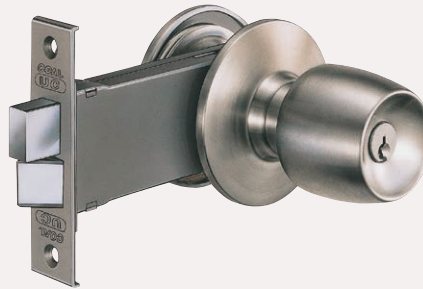
(Photo shows cup handles on both sides, model UCC-1 with <sup>B</sup>/s 64 mm.)

\* A knob on one side type is also available.



• **P-UCC-7Q**

(Photo shows knob on one side, 6-pin cylinder, model UCC-7 with <sup>B</sup>/s 100 mm.)



• **GC-1**

(Photo shows cup handles on both sides, model GC-1, <sup>B</sup>/s 64 mm.)

\* A knob on one side type is also available.



**Integral locks UC and G series cup handle locks providing simple installation and excellent operability UCC (backset 100 mm) and GC are compact and can be installed on door with a horizontal narrow frame.**

**UCC specifications (Door thickness: ## mm or more-less than ## mm)**

Backset	57 mm, 64 mm, 83 mm, 100 mm (100 mm is for door with a horizontal narrow frame.)
Door thicknesses (Contact GOAL for more information.)	Cup handle on both sides: 29 (28 for 100 mm)-33 / 33-38 / 38-43 / 43-48 / 48-53 mm Cup handle on one side: 29 (28 for 100 mm)-33 / 33-43 / 43-53 mm
Cylinder (with knob on one side)	(Note) GP, V18, GV cylinders (Q and B type knobs only) 6-pins, 7-pins (Q, Y, K, B type knobs) 5-pins cylinder (E type knobs)
Key system	Various key systems are available (MK, GMK, GGMK, RMK, CNK, etc.). (V18, GV: Optional key change system available) (GV: Universal Key System not supported)

Note: Production of new master key plans for 5-pin, 6-pin, and 7-pin cylinders discontinued as of March 2017.

**GC specifications (Door thickness: ## mm or more-less than ## mm)**

Backset	64 mm, 100 mm
Door thicknesses (Contact GOAL for more information.)	Cup handle on both sides: 28-33 / 33-38 / 38-43 / 43-48 / 48-53 mm Cup handle on one side: 28-33 / 33-43 / 43-53 mm
Cylinder (with knob on one side)	(Note) GP, V18, GV cylinders (Q and B type knobs only) 6-pins, 7-pins (Q, Y, K, B type knobs) 5-pins cylinder (E type knobs) SP 5-pins cylinder (N type knobs) (MK and other key systems are not supported.)
Key system	Various key systems are available (MK, GMK, GGMK, RMK, CNK, etc.). (V18, GV: Optional key change system available) (GV: Universal Key System not supported)

Note: Production of new master key plans for 5-pin, 6-pin, and 7-pin cylinders discontinued as of March 2017.

**List of UCC series models**

When ordering, add the cylinder symbol (GP, V, GV, etc.) to the model, for example V-UCC-7Q.

Compatible cylinders and cylinder symbols	Model (Note 1)	Illustration (Cup handle) on both sides	Illustration (Cup handle) on one side
—	<b>UCC-1</b> (Cup handle on both sides)	Inside Outside	Inside Outside
	<b>UCC-1*</b> (Cup handle on one side)		
—	<b>UCC-3*</b> (Cup handle on one side)	—	
<b>GP</b> (GP) <b>V</b> (V18) <b>GV</b> (GV)	<b>UCC-7*</b> (Cup handle on one side)	—	
<b>P</b> (6-pin) <b>Z</b> (7-pin)		—	
<b>N</b> (5-pin)		—	
Cup handle		—	UCC, cup handle on both sides (for UCC)

Note 1: \* indicates the knob design (Q, Y, K, B, E) for cup handle on one side.

**List of GC series models**

When ordering, add the cylinder symbol (GP, V, GV, etc.) to the model, for example V-GC-7Q.

Compatible cylinders and cylinder symbols	Model (Note 1)	Illustration (Cup handle) on both sides	Illustration (Cup handle) on one side
—	<b>GC-1</b> (Cup handle on both sides)	Inside Outside	Inside Outside
	<b>GC-1*</b> (Cup handle on one side)		
—	<b>GC-3*</b> (Cup handle on one side)	—	
<b>GP</b> (GP) <b>V</b> (V18) <b>GV</b> (GV)	<b>GC-7*</b> (Cup handle on one side)	—	
<b>P</b> (6-pin) <b>Z</b> (7-pin)		—	
<b>N</b> (5-pin)		—	
Cup handle		—	UCC, cup handle on both sides (for GC)

Note 1: \* indicates the knob design (Q, Y, K, B, E) for cup handle on one side.

Information

Precautions  
Table of contents /  
Product list  
Basic information

Cylinders  
Keying  
systems

Locks

Push-pull  
locks

Lever  
handle  
locks

Mortise  
locks

Integral  
locks  
Cylindrical  
locks

Rim dead  
locks

Dead locks  
Cremon  
locks  
Glass door  
locks

Emergency  
locks  
Cup handle  
locks

Sliding  
door locks

Electric locks  
Security systems

Ten-key  
pads

Key switches  
Interlock /  
emergency  
door  
systems

Hotel card  
locks

Electric  
locks

Electrical  
conductors,  
Control  
boxes

Dimensions

# AH AHP

## Mortise locks AH Anti-panic locks AHP

Model	Compatible cylinders	Model No.	Hand	Backset	Door thickness (Contact GOAL for more information.)
AH	GP [GP] V18 [V]	6 pins [P] 7 pins [Z]	1, 3, 5, 6, 68, 7, 8	76 mm 100 mm	35~50 mm (When S1 escutcheon is used: 35~53 mm)
AHP	GV [GV]	5, 7	R-hand, L-hand*		35~45 / 45~50 mm

Door thickness: ## mm or more-less than ## mm

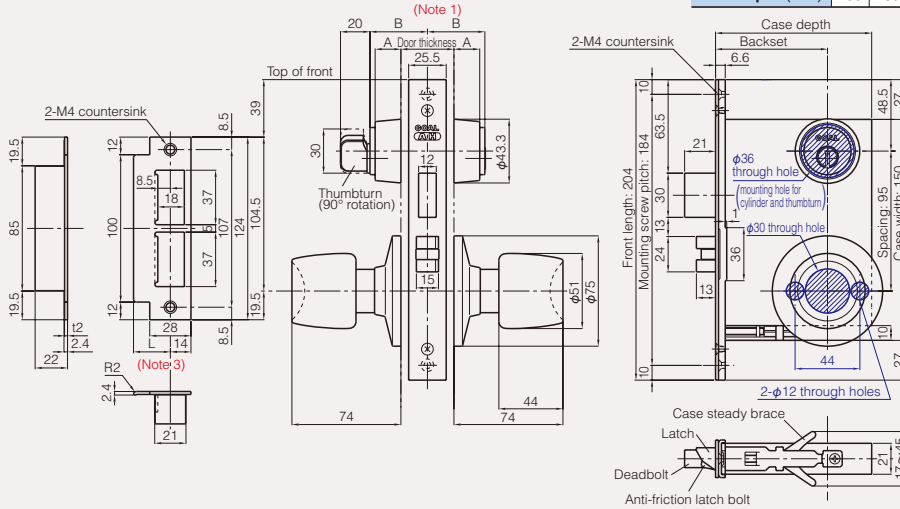
**Dimensions/Notch** (Unit: mm) (The model No. 6, 68, 8 notches are the same as No. 5 in the illustration. However for No. 3 and 7, there is a mounting hole for the cylinder and thumbturn on one side only. For No. 1, there is only the knob mounting hole.)

● **V-AH,AHP-5Q** (backset 76, 100 mm) <Illustration shows a V18 cylinder, Q type knob.>

\* The shape and notch dimensions of AHP anti-panic locks are the same as AH, however there are products for lock handing and the door thickness specifications are also different.

\* In addition to the Q type knob shown in the illustration, various other types are available. (Refer to illustration below.)

Backset (mm)	76	100
Case depth (mm)	106	130



(Note 1)

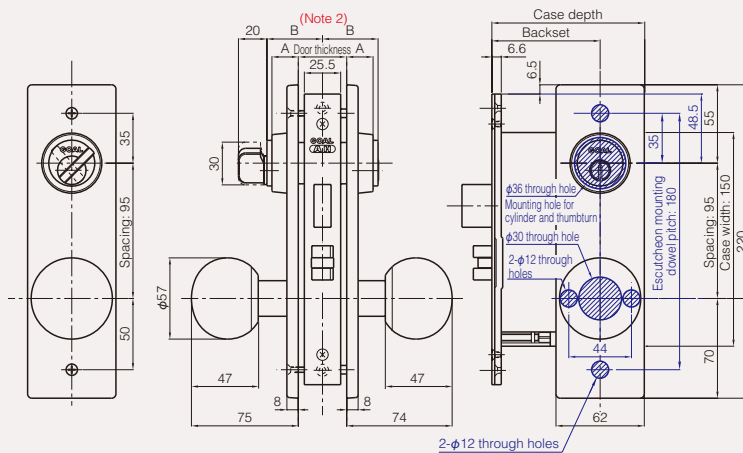
**Dimensions A and B for cylinders and thumbturns**

Door thickness (mm)	Dimension (mm)	
	A (Collar height)	B (Cylinder and thumbturn height)
35~50	17.5	39
50~63	17.5	46
63~73	22.5	56
73~83	17.5	56

● **V-AH-5B(S1)** <Illustration shows example of using B type knob, S1 escutcheon.>

(Door thickness 35~38 / 38~43 / 43~48 / 48~53 mm)

Backset (mm)	76	100
Case depth (mm)	106	130



(Note 2)

**Dimensions A and B for cylinders and thumbturns when S1 escutcheon is used**

Door thickness (mm)	Dimension (mm)	
	A (Collar height)	B (Cylinder and thumbturn height)
35~38	22	39
38~43	19.5	39
43~48	17	39
48~53	14.5	39

(Note 3)

**Strike plate lip (L) dimension**

For single leaf door			
Model	Door thickness (minimum~less than) mm	Classification	L dimension (mm)
AH	35~50	25L	25
AHP	35~45	25L	25
	45~50	30L	30

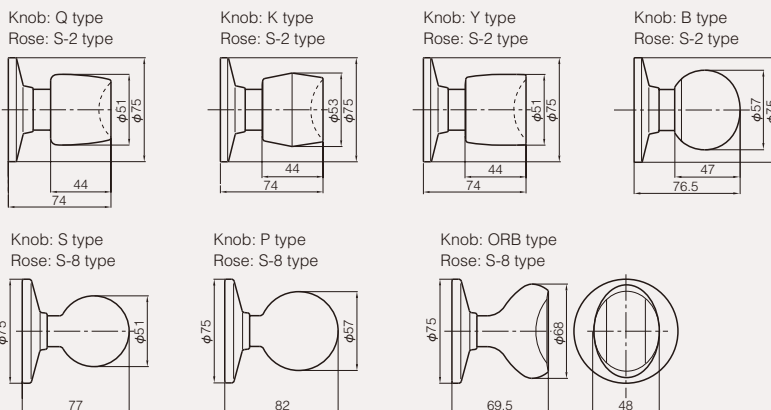
For double leaf door (AH, AHP)		
Door thickness (minimum~less than) mm	Classification	L dimension (mm)
35~37	18L	18
37~42	20L	20
43~47	23L	23
47~51	25L	25
53	28L	28

\* Indicate the door thickness when ordering.

**Precautions when selecting a strike plate**

The strike plate shown in the table above is set as standard according to the door thickness, however in the case of a single leaf door and depending on the conditions of the door and frame, the strike plate may protrude by a large amount. Check the conditions of the door and frame, and select a strike plate with the optimal lip (L) dimension from the table so that the amount of strike plate protrusion is not too large.

● **AH, AHP knob** (\* AH-82, 84, 85 knobs are Q, Y, K types only.)



Information

Precautions  
Table of contents /  
Product list  
Basic information

Cylinders  
Keying  
systems

Locks

Push-pull  
locks

Lever  
handle  
locks

Mortise  
locks

Integral  
locks  
Cylindrical  
locks

Rim dead  
locks

Dead locks  
Cremon  
locks  
Glass door  
locks

Emergency  
locks  
Cup handle  
locks

Sliding  
door locks

Electric locks  
Security systems

Ten-key  
pads

Key switches  
Interlock /  
emergency  
door  
systems

Hotel card  
locks

Electric  
locks

Electrical  
conductors,  
Control  
boxes

Dimensions

# AH-82, 84, 85 Mortise office locks

AH-82, 84 (push-button), 85 (turn-button)

Compatible cylinders	Model No.	Backset	Door thickness (Contact GOAL for more information.)
GP [GP] 6 pins [P]	82, 84, 85	76 mm 100 mm	35-37.5 / 37.5-42.5 /
V18 [V] 7 pins [Z]			42.5-47.5 / 47.5-50 mm
GV [GV]			(Gap: 6 mm or less)

- Information
- Precautions
- Table of contents / Product list
- Basic information

Cylinders Keying systems

Locks

Push-pull locks

Lever handle locks

Mortise locks

Integral locks Cylindrical locks

Rim dead locks

Dead locks Cremon locks Glass door locks

Emergency locks Cup handle locks

Sliding door locks

Electric locks Security systems

Ten-key pads

Key switches Interlock / emergency door systems

Hotel card locks

Electric locks

Electrical conductors, Control boxes

Dimensions

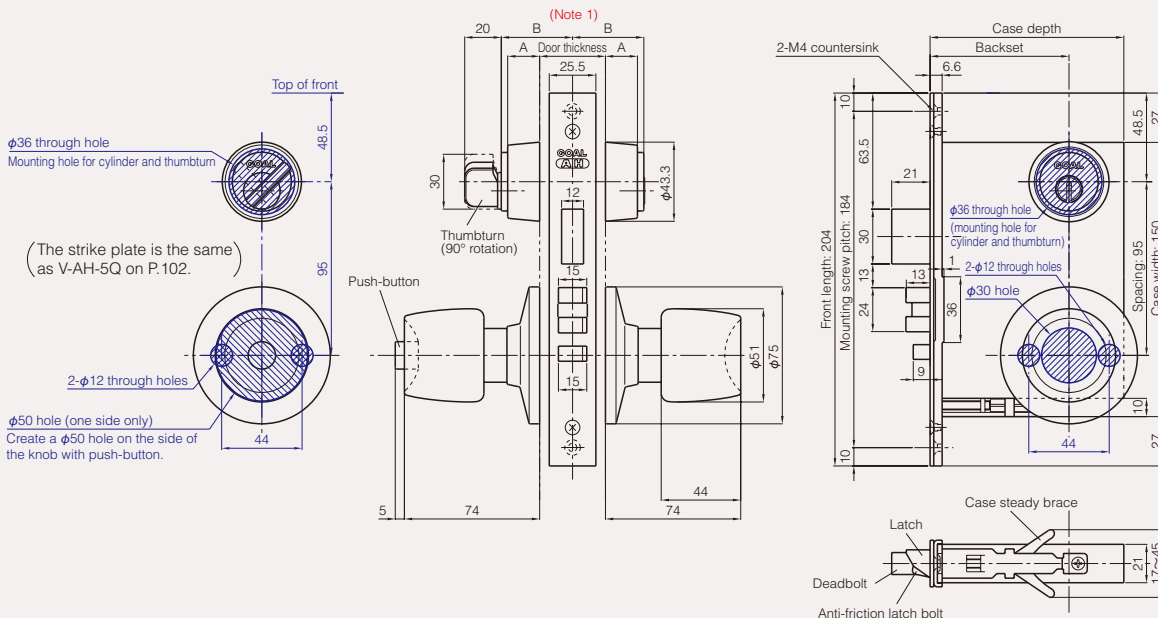
Dimensions/Notch (Unit: mm)

Door thickness: ## mm or more-less than ## mm

● V-AH-82, 84Q (backset 76, 100 mm) <Illustration shows a V18 cylinder, Q type knob, push-button.>

\* AH-82, 84 knobs are Q, Y, K types only.

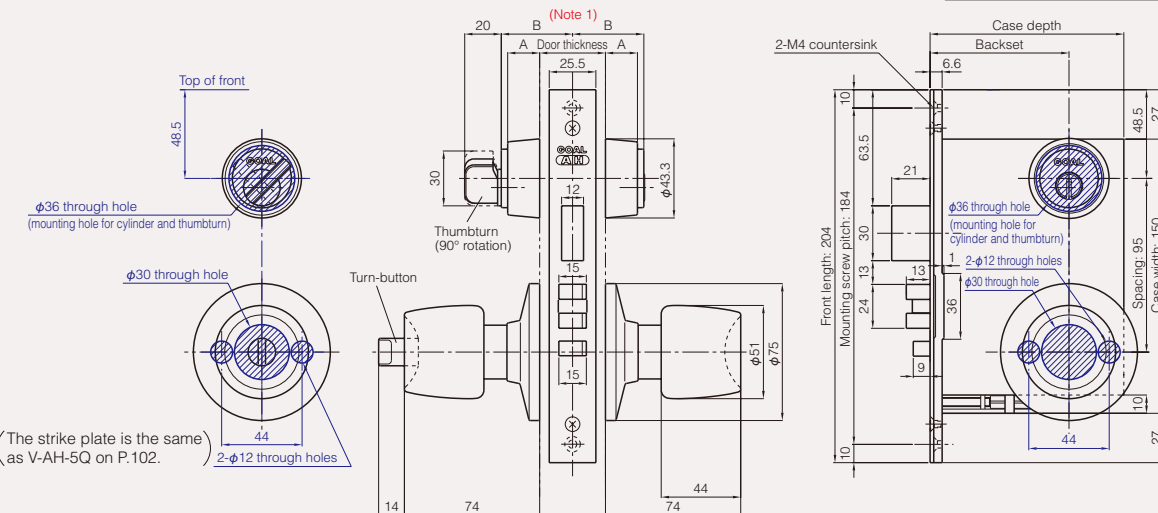
Backset (mm)	76	100
Case depth (mm)	106	130



● V-AH-85Q (backset 76, 100 mm) <Illustration shows a V18 cylinder, Q type knob, turn-button.>

\* AH-85 knobs are Q, Y, K types only.

Backset (mm)	76	100
Case depth (mm)	106	130



Note 2: The strike plate is the same as the AH series on P.102, however refer to the table below for the lip (L) dimension.

(Note 1)

Door thickness (mm)	Dimension (mm)	
	A (Collar height)	B (Cylinder and thumbturn height)
35-50	17.5	39
50-63	17.5	46
63-73	22.5	56
73-83	17.5	56

(Note 2)

Strike plate lip (L) dimension		
For single leaf door		
Door thickness (minimum~less than) mm	Classification	L dimension (mm)
35-42.5	25L	25
42.5-50	30L	30

For double leaf door		
Door thickness (minimum~less than) mm	Classification	L dimension (mm)
35-37	18L	18
37-42	20L	20
43-47	23L	23
47-50	25L	25

**⚠ Precautions when selecting a strike plate**  
 The strike plate shown in the table above is set as standard according to the door thickness, however in the case of a single leaf door and depending on the conditions of the door and frame, the strike plate may protrude by a large amount.  
 Check the conditions of the door and frame, and select a strike plate with the optimal lip (L) dimension from the table so that the amount of strike plate protrusion is not too large.

\* Indicate the door thickness when ordering.



# AH-9 Mortise hotel locks

AH-9 (examples of using No.9 escutcheon, No.1 escutcheon)

Compatible cylinders	Model No.	Hand	Backset	Door thickness (Contact GOAL for more information.)
GP [GP] V18 [V] GV [GV]	6 pins [P] 7 pins [Z]	9	R L	76 mm 100 mm
36-42, 42-48 mm (Gap: 6 mm or less)				

▼ Information

Precautions  
Table of contents /  
Product list  
Basic information

Cylinders  
Keying  
systems

▼ Locks

Push-pull  
locks

Lever  
handle  
locks

Mortise  
locks

Integral  
locks  
Cylindrical  
locks

Rim dead  
locks

Dead locks  
Cremon  
locks  
Glass door  
locks

Emergency  
locks  
Cup handle  
locks

Sliding  
door locks

▼ Electric locks  
Security systems

Ten-key  
pads

Key switches  
Interlock /  
emergency  
door  
systems

Hotel card  
locks

Electric  
locks

Electrical  
conductors,  
Control  
boxes

Dimensions

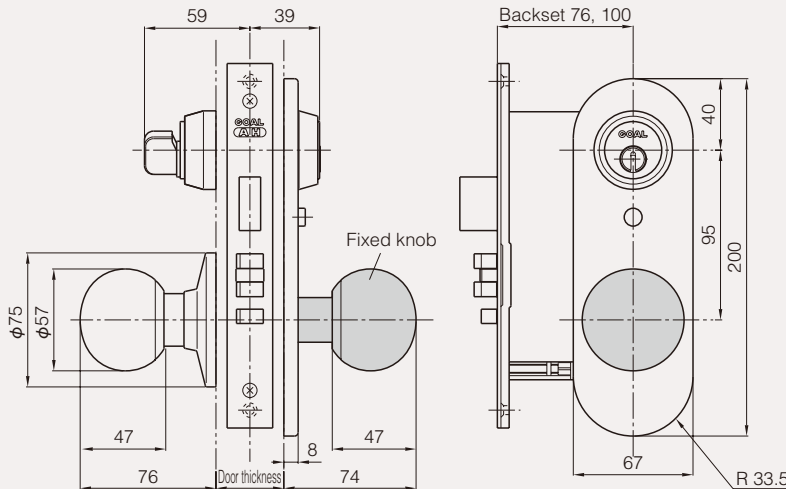
■ Dimensions/Notch (Unit: mm)

Door thickness: ## mm or more-less than ## mm

● Example of using a No. 9 type escutcheon

(Note: No. 9 type escutcheons are installed only on the outside of the door. Pay attention when creating the door notches.)

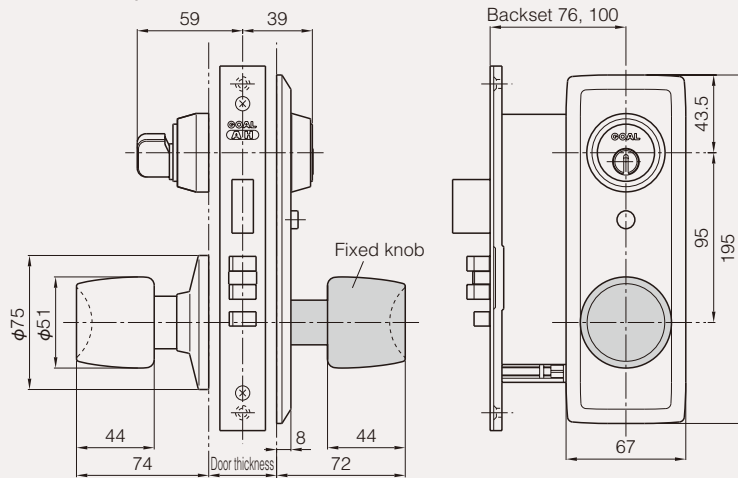
● AH-9B (with No. 9 escutcheon)



● Example of using a No. 1 type escutcheon

(Note: No. 1 type escutcheons are installed only on the outside of the door. Pay attention when creating the door notches.)

● AH-9Q (with No. 1 escutcheon)



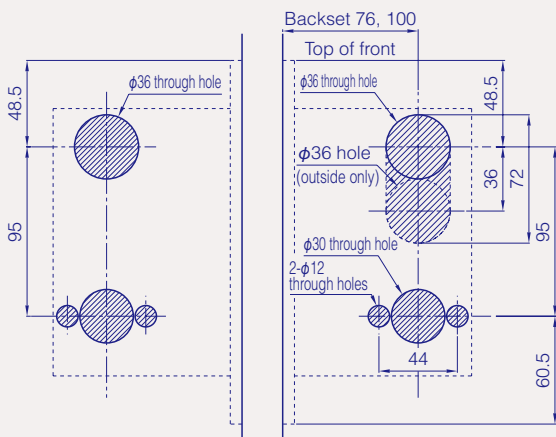
<Door notch dimensions>

● No. 1 escutcheon, No. 9 escutcheon

(Note: Be aware that the notches are different on the inside and outside of the door.)

<Inside (thumbturn side)>

<Outside (cylinder side)>









# HS, HSP HST, HSTP

## Mortise locks HS, anti-panic locks HSP Automatic locking locks HST, HSTP

Model	Compatible cylinders	Model No.	Hand	Backset	Door thickness (Contact GOAL for more information.)	Gap (door and jamb)
HS, HST	GP [GP]	6 pins [P]	3,5,6,7	—	76 mm	29~33 / 33~43 / 43~53 mm
HSP*	V18 [V]	7 pins [Z]	3,5,6,7	R type		
HSTP*	GV [GV]	7	L type	L type		

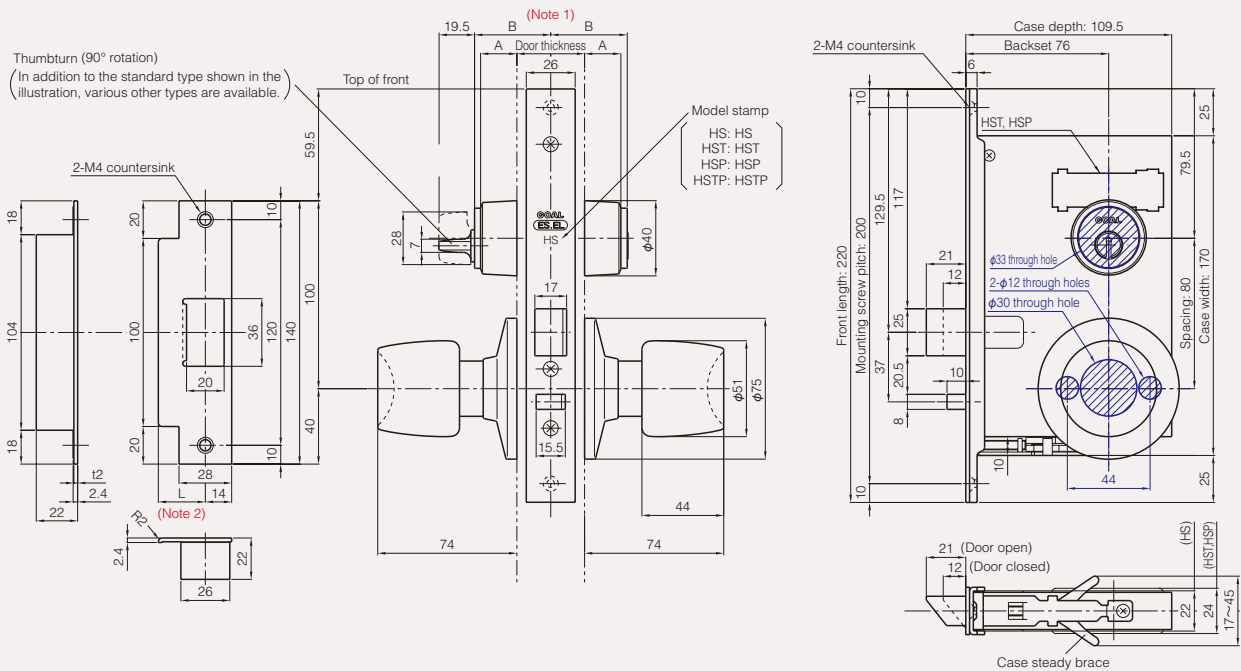
Door thickness: ## mm or more~less than ## mm

**Dimensions/Notch** (Unit: mm) (The model No. 6 notch is the same as No. 5 in the illustration. However for No. 3 and 7, there is a mounting hole for the cylinder and thumbturn on one side only.)

### ● V-HS,HST,HSP-5Q (backset 76 mm) <Illustration shows a V-HS-5Q with V18 cylinder, Q type knob.>

\* HSP and HSTP have lock handing (R type: Right-hinged out-swinging or left-hinged in-swinging door, L type: Left-hinged out-swinging or right-hinged in-swinging door.)

\* In addition to the Q type knob shown in the illustration, various other types are available. (Refer to illustration below.)



(Note 1)

#### Dimensions A and B for cylinders and thumbturns

Door thickness (mm)	Dimension (mm)	
	A (Collar height)	B (Cylinder and thumbturn height)
29~43	19.5	38.5
43~53	14.5	38.5
53~63	19.5	48.5
63~73	14.5	48.5
73~83	19.5	58.5

(Note 2)

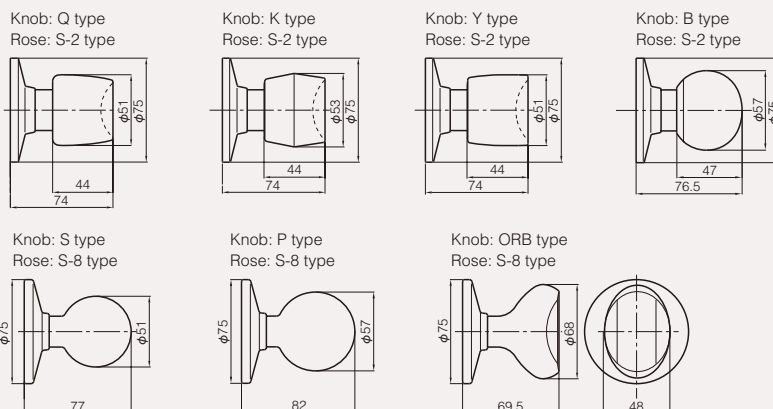
#### Strike plate lip (L) dimension

For single leaf door ⚠			For double leaf door		
Door thickness (minimum~less than) mm	Classification	L dimension (mm)	Door thickness (minimum~less than) mm	Classification	L dimension (mm)
29~33	20L	20	29~33	16L	16
33~43	25L	25	33~37	18L	18
43~53	30L	30	37~42	20L	20
53~60	33L	33	43~47	23L	23
			47~51	25L	25
			53~57	28L	28
			57~61	30L	30
			63~67	33L	33

#### ⚠ Precautions when selecting a strike plate

The strike plate shown in the table above is set as standard according to the door thickness, however in the case of a single leaf door and depending on the conditions of the door and frame, the strike plate may protrude by a large amount. Check the conditions of the door and frame, and select a strike plate with the optimal lip (L) dimension from the table so that the amount of strike plate protrusion is not too large.

#### ● HS series knobs



#### Information

Precautions  
Table of contents /  
Product list  
Basic information

#### Cylinders Keying systems

#### Locks

#### Push-pull locks

#### Lever handle locks

#### Mortise locks

#### Integral locks Cylindrical locks

#### Rim dead locks

#### Dead locks Cremon locks Glass door locks

#### Emergency locks Cup handle locks

#### Sliding door locks

#### Electric locks Security systems

#### Ten-key pads

#### Key switches Interlock / emergency door systems

#### Hotel card locks

#### Electric locks

#### Electrical conductors, Control boxes

#### Dimensions



UC

# Integral locks UC

## List of knobs

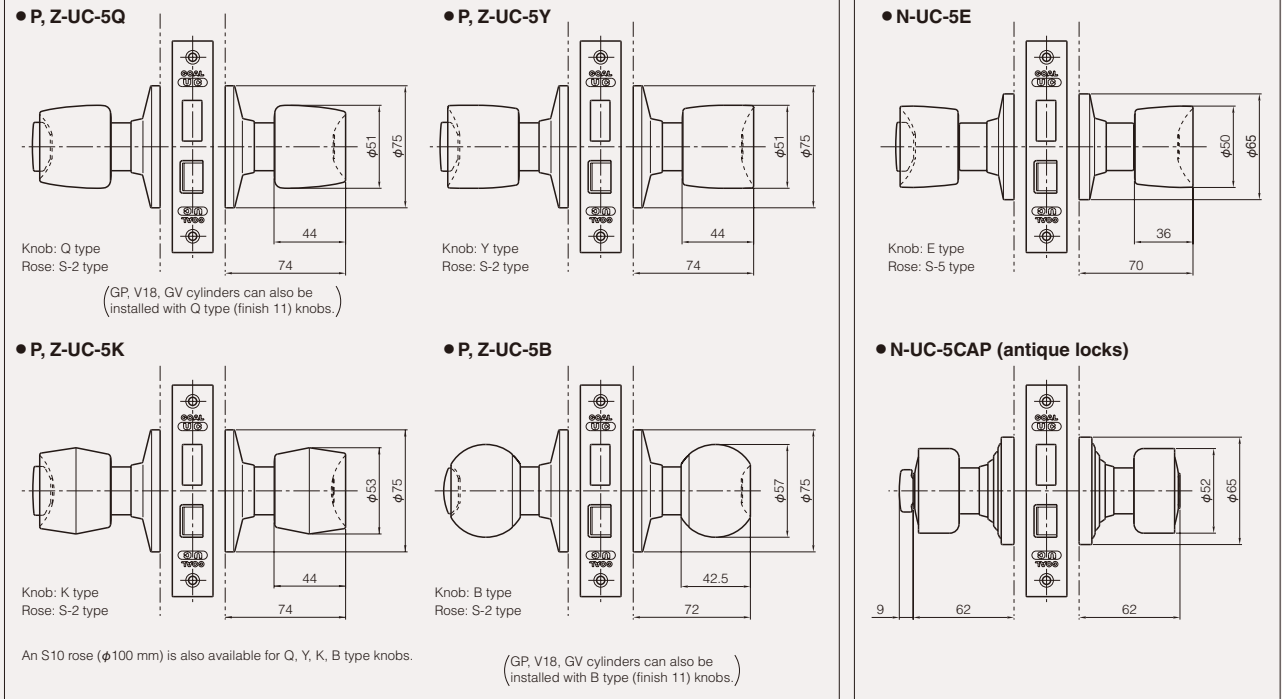
Compatible cylinders	Knobs	Model No.	Backset	Door thickness (Contact GOAL for more information.)
GP [GP], V18 [V] GV [GV]	Q (11), B (11)	1, 3, 45, 5, 6, 7 (For 45, knobs are Q, K, E types only.)	57, 64, 83 mm 100 mm	25-33 / 33-43 / 43-53 mm (Note)
6 pins [P]	Q, Y, K, B			
7 pins [Z]				
5 pins [N]	E			

Door thickness: ## mm or more-less than ## mm

**Dimensions/Notch** (Unit: mm) **⚠ Precautions:** Be aware that depending on the frame conditions, when the backset is 57 mm, there may be the risk of fingers being jammed when the knob is turned.

● Knobs used with 6-pin, 7-pin cylinders (\* GP, V18, GV cylinders can also be installed with Q, B type knobs.)

● Knobs used with 5-pin cylinders



### Information

Precautions  
Table of contents /  
Product list  
Basic information

Cylinders  
Keying  
systems

### Locks

Push-pull  
locks

Lever  
handle  
locks

Mortise  
locks

Integral  
locks  
Cylindrical  
locks

Rim dead  
locks

Dead locks  
Cremon  
locks  
Glass door  
locks

Emergency  
locks  
Cup handle  
locks

Sliding  
door locks

Electric locks  
Security systems

Ten-key  
pads

Key switches  
Interlock /  
emergency  
door  
systems

Hotel card  
locks

Electric  
locks

Electrical  
conductors,  
Control  
boxes

### Dimensions



# UH

## Uni-Locks (cylindrical locks) UH series



Information

Precautions  
Table of contents /  
Product list  
Basic information

Cylinders  
Keying  
systems

Locks

Push-pull  
locks

Lever  
handle  
locks

Mortise  
locks

Integral  
locks  
Cylindrical  
locks

Rim dead  
locks

Dead locks  
Cremon  
locks  
Glass door  
locks

Emergency  
locks  
Cup handle  
locks

Sliding  
door locks

Electric locks  
Security systems

Ten-key  
pads

Key switches  
Interlock /  
emergency  
door  
systems

Hotel card  
locks

Electric  
locks

Electrical  
conductors,  
Control  
boxes

Dimensions

Knobs	Compatible cylinders	Model No.	Backset	Door thickness (Note)	Gap (door and jamb)
Q, K, Y, B	6 pins [P] 7 pins [Z]	1, 3, 4, 5, 6, 7 8, 9*	60, 70, 89, 127 mm	30~34 mm (special thin specification) 34~50 mm (standard) 50~60 mm (special thick specification)	6 mm or less

**Dimensions/Notch** (Unit: mm)

(The notch is the same as No. 5 in this illustration for all models.)

● **P-UH-5Q** (backset 60, 70, 89, 127 mm)

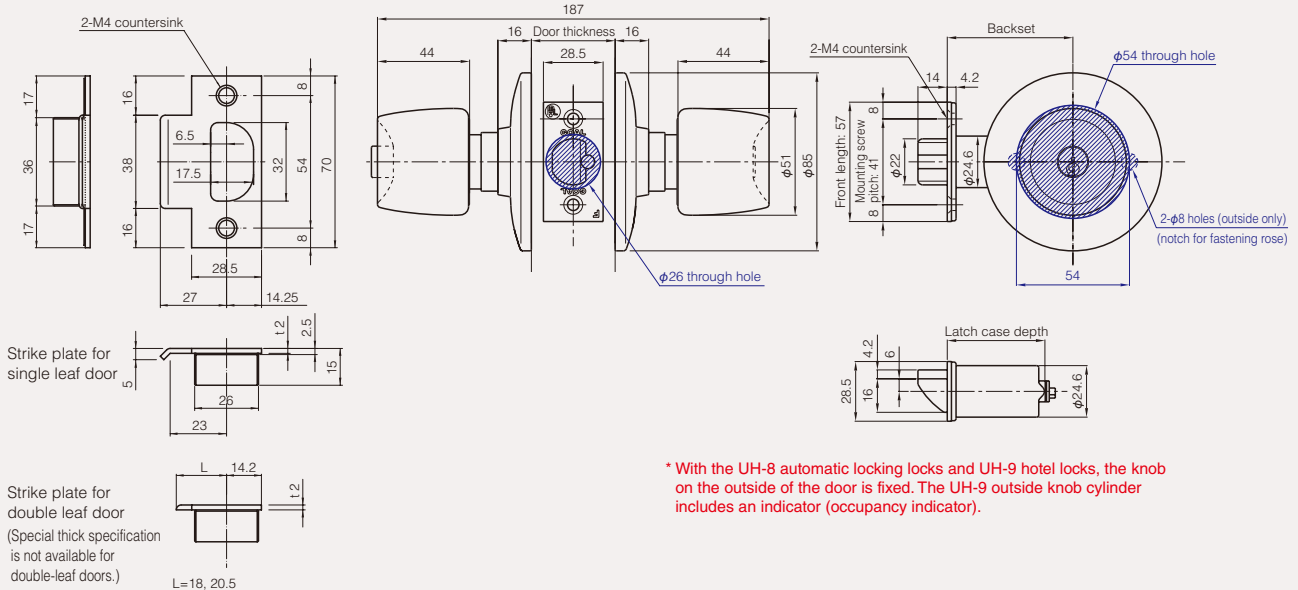
<Illustration shows a 6-pin cylinder, Q type knob.>

Note: Special thin specification is required for door thickness 30~34, and special thick specification is required for door thickness 50~60 mm. Please contact us.

Door thickness: ## mm or more~## mm or less

- Precautions:**
1. Press the button on the door inside to lock. Be aware that the lock cannot be locked using the key. However model No 6 (double-cylinder lock) and model No. 7 (single-cylinder outside lock) are locked and unlocked from the outside using the key.
  2. Be aware that depending on the frame conditions, when the backset is 60 mm, there may be the risk of fingers being jammed when the knob is turned.

Backset (mm)	60	70	89	127
Latch case depth (mm)	36.3	46.4	65.1	103.3

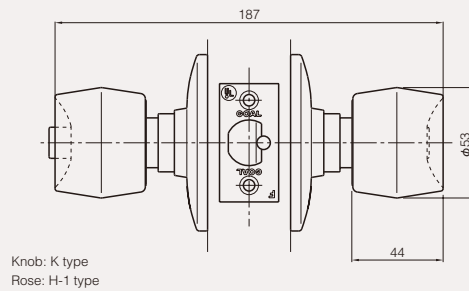
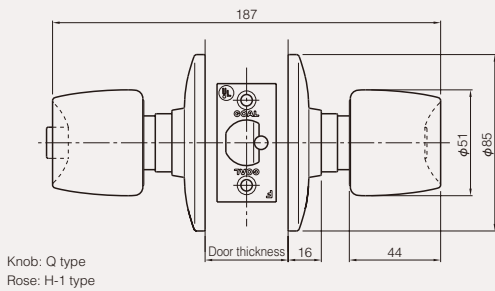


\* With the UH-8 automatic locking locks and UH-9 hotel locks, the knob on the outside of the door is fixed. The UH-9 outside knob cylinder includes an indicator (occupancy indicator).

● List of UH series knobs (For standard door thickness 34~50 mm)

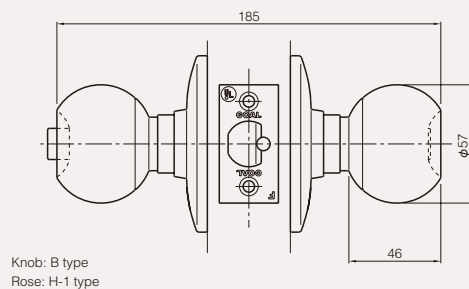
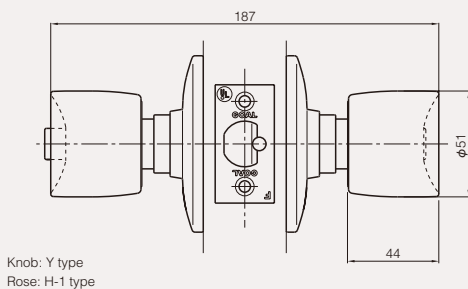
● **UH-5Q**

● **UH-5K**



● **UH-5Y**

● **UH-5B**



Knobs	Compatible cylinders	Model No.	Backset	Door thickness	Gap (door and jamb)
Q, Y, K, B	6 pins [P] 7 pins [Z]	1, 4, 5, 6 7, 8*	50, 57, 60, 64 70, 89, 127 mm	△25-30 mm (for thin doors) 30-45 mm (standard) 45-60 mm (for thick doors)	6 mm or less
E, F	5 pins [N]				

Information

Precautions  
Table of contents /  
Product list  
Basic information

Cylinders  
Keying  
systems

Locks

Push-pull  
locks

Lever  
handle  
locks

Mortise  
locks

Integral  
locks  
Cylindrical  
locks

Rim dead  
locks

Dead locks  
Cremon  
locks  
Glass door  
locks

Emergency  
locks  
Cup handle  
locks

Sliding  
door locks

Electric locks  
Security systems

Ten-key  
pads

Key switches  
Interlock /  
emergency  
door  
systems

Hotel card  
locks

Electric  
locks

Electrical  
conductors,  
Control  
boxes

Dimensions

**Dimensions/Notch** (Unit: mm)

(The notch is the same as No. 5 in this illustration for all models.)

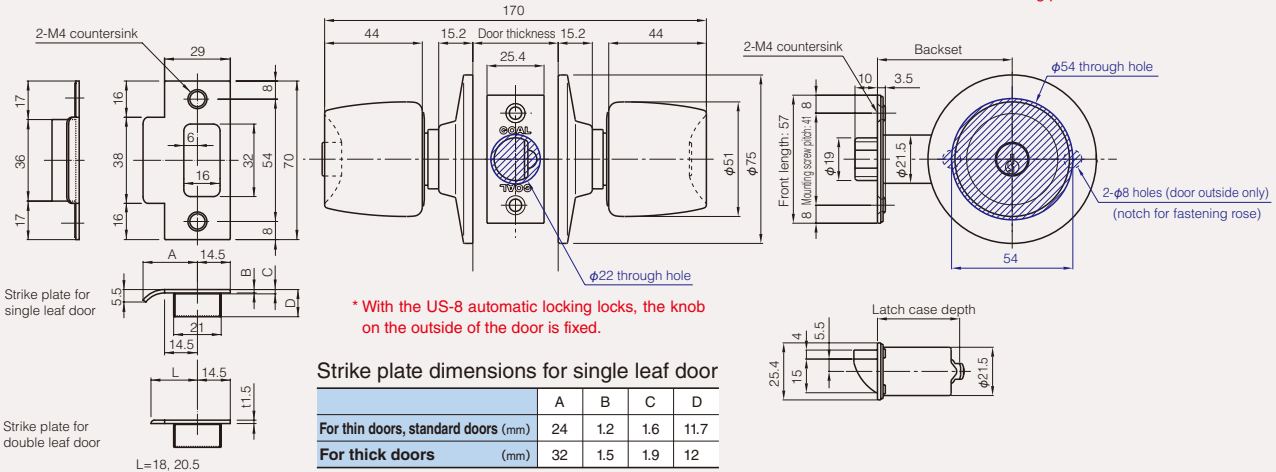
**P-US-5Q**

<Illustration shows a 6-pin cylinder, Q type knob, backset 60 mm.>

Backset (mm)	50	57	60	64	70	89	127
Latch case depth (mm)	24.9	31.9	35.3	39.3	45.3	64.1	102.1

Door thickness: ## mm or more-## mm or less

- Precautions:**
1. Press the button on the door inside to lock. Be aware that the lock cannot be locked using the key. However model No 6 (double-cylinder lock) and model No. 7 (single-cylinder outside lock) are locked and unlocked from the outside using the key.
  2. Be aware that depending on the frame conditions, when the backset is 60 mm or less, there may be the risk of fingers being jammed when the knob is turned.
  3. Be aware that although mounting is possible when the door thickness at the rose mounting point is 25 mm or more, the thickness at the latch front mounting point must be 28 mm or more.



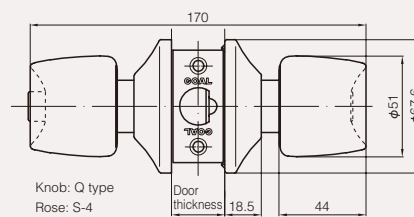
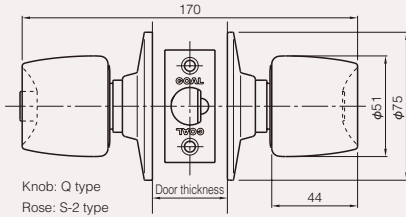
\* With the US-8 automatic locking locks, the knob on the outside of the door is fixed.

**List of US series knobs**

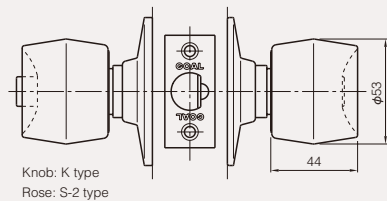
(With 6-pin or 7-pin cylinder and standard door thickness 30-45 mm)

(With 6-pin or 7-pin cylinder and thin door 25-30 mm)

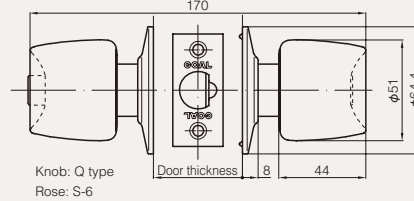
**US-5Q**



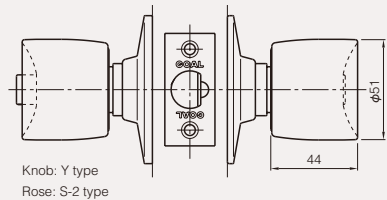
**US-5K**



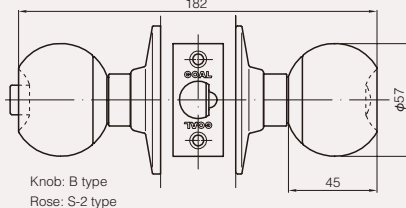
(With 6-pin or 7-pin cylinder and thick door 45-60 mm)



**US-5Y**

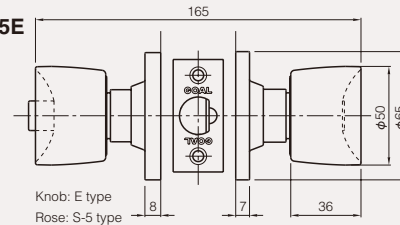


**US-5B**

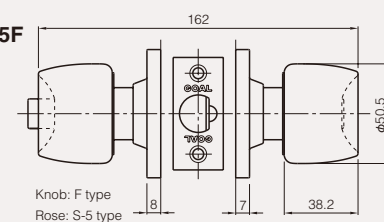


**With 5-pin cylinder (E type, F type knob)**

**US-5E**



**US-5F**



Note: The rose shape differs depending on the door thickness.  
(25-30 mm: S-4 type, 30-45 mm: S-2 type, 45-60 mm: S-6 type)

Information

Precautions  
Table of contents /  
Product list  
Basic information

Cylinders  
Keying  
systems

Locks

Push-pull  
locks

Lever  
handle  
locks

Mortise  
locks

Integral  
locks  
Cylindrical  
locks

Rim dead  
locks

Dead locks  
Cremon  
locks  
Glass door  
locks

Emergency  
locks  
Cup handle  
locks

Sliding  
door locks

Electric locks  
Security systems

Ten-key  
pads

Key switches  
Interlock /  
emergency  
door  
systems

Hotel card  
locks

Electric  
locks

Electrical  
conductors,  
Control  
boxes

Dimensions

Knobs	Cylinder	Model No.	Backset	Door thickness	Gap (door and jamb)
E, F	Wafer cylinder	5	50, 57, 60, 64, 70, 89, 127 mm	25-30, 27-37 mm	6 mm or less

Door thickness: ## mm or more~## mm or less

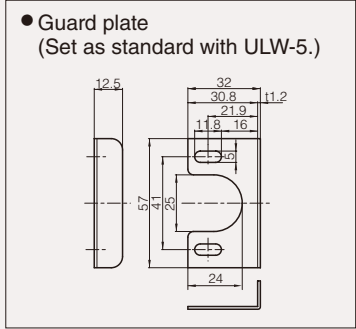
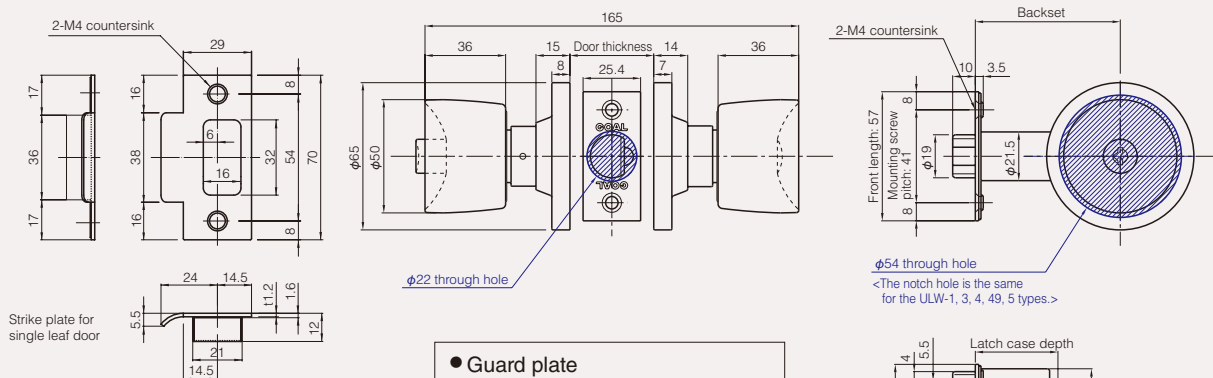
### Dimensions/Notch (Unit: mm)

(The notch is the same as No. 5 in this illustration for all models.)

- Precautions:**
1. Press the button on the door inside to lock. Be aware that the lock cannot be locked using the key.
  2. Be aware that depending on the frame conditions, when the backset is 60 mm or less, there may be the risk of fingers being jammed when the knob is turned.
  3. Be aware that although mounting is possible when the door thickness at the latch front mounting point is 25 mm or more, the thickness at the latch front mounting point must be 28 mm or more.

### ULW-5E <Illustration shows an E type knob with backset 60 mm.>

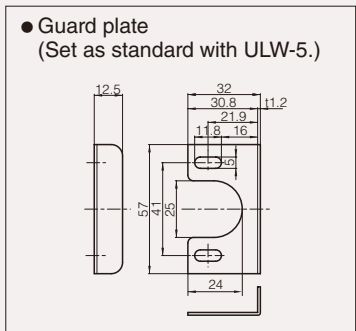
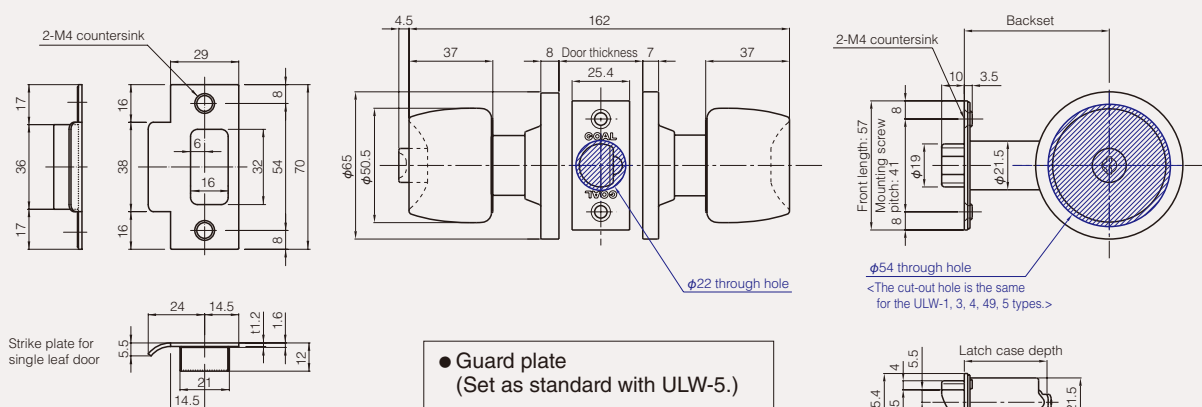
Backset (mm)	50	57	60	64	70	89	127
Latch case depth (mm)	24.9	31.9	35.3	39.3	45.3	64.1	102.1



### ULW-5F <Illustration shows an F type knob with backset 60 mm.>

Note: F type knob for ULW has been discontinued.

Backset (mm)	50	57	60	64	70	89	127
Latch case depth (mm)	24.9	31.9	35.3	39.3	45.3	64.1	102.1







# AHC Mortise lock cup handle locks

## AHC

Information

Precautions  
Table of contents /  
Product list  
Basic information

Cylinders  
Keying  
systems

Locks

Push-pull  
locks

Lever  
handle  
locks

Mortise  
locks

Integral  
locks  
Cylindrical  
locks

Rim dead  
locks

Dead locks  
Cremon  
locks  
Glass door  
locks

Emergency  
locks  
Cup handle  
locks

Sliding  
door locks

Electric locks  
Security systems

Ten-key  
pads

Key switches  
Interlock /  
emergency  
door  
systems

Hotel card  
locks

Electric  
locks

Electrical  
conductors,  
Control  
boxes

Dimensions

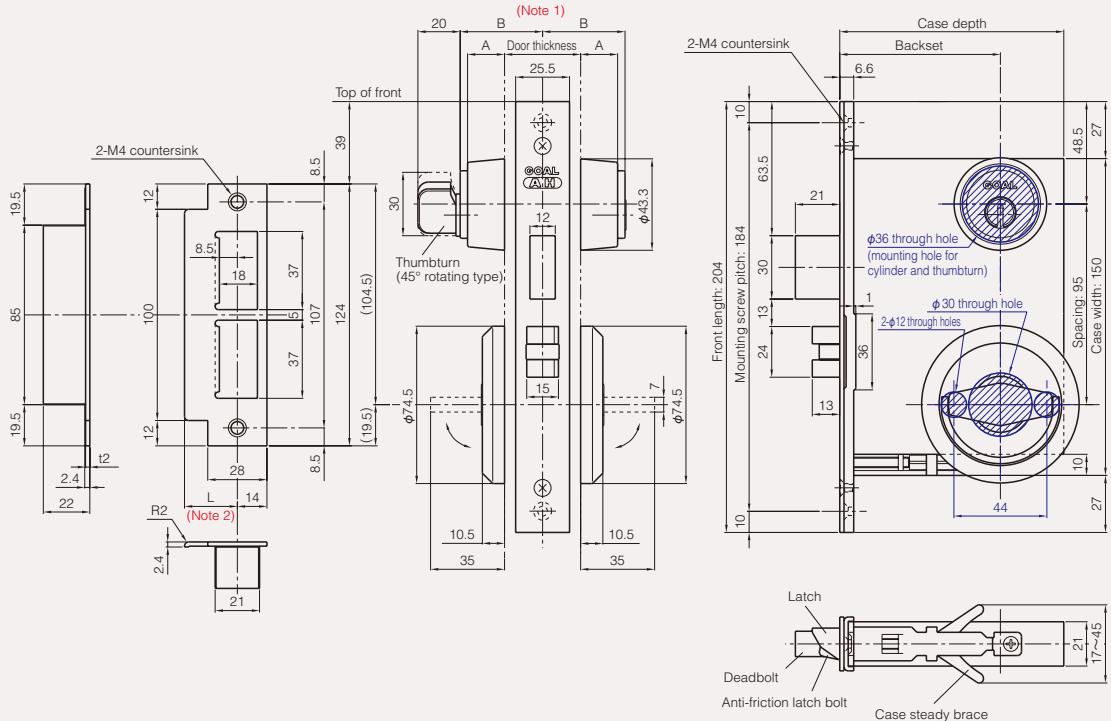
Compatible cylinders	Model No.	Backset	Door thickness (Contact GOAL for more information.)
GP [GP] V18 [V] GV [GV]	6 pins [P] 7 pins [Z]	1,3,5,6,7	76 mm 100 mm 35~43 / 43~50 mm

Door thickness: ## mm or more~less than ## mm

**■ Dimensions/Notch** (Unit: mm) (The model No. 6 notch is the same as No. 5 in the illustration.  
(However create a thumbturn mounting hole (No. 3) or cylinder mounting hole (No. 7) on one side only.)  
For No. 1, create a handle mounting hole only.)

● **V-AHC-5**(backset 76, 100 mm) <Illustration shows a V18 cylinder, cup handles on both sides. >

Backset (mm)	76	100
Case depth (mm)	106	130

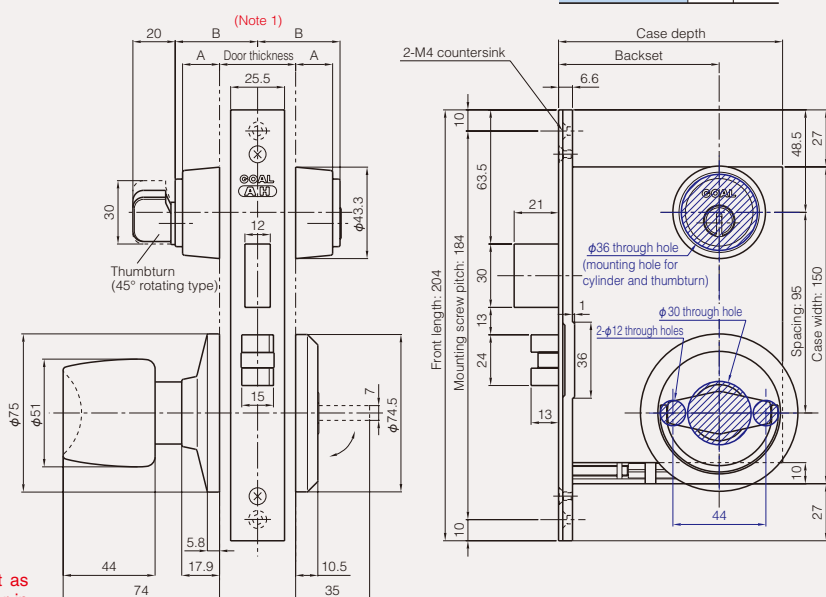


(Note 1) **■ Dimensions A and B for cylinders and thumbturns**

Door thickness (mm)	Dimension (mm)	
	A (Collar height)	B (Cylinder and thumbturn height)
35~50	17.5	39
50~63	17.5	46
63~73	22.5	56
73~83	17.5	56

● **V-AHC-5Q**(backset 76, 100 mm) <Illustration shows a V18 cylinder, cup handle on one side, Q type knob on one side. >

Backset (mm)	76	100
Case depth (mm)	106	130



(Note 2) **■ Strike plate lip (L) dimension**

For single leaf door		
Door thickness (minimum~less than) mm	Classification	L dimension (mm)
35~43	25L	25
43~53	30L	30
For double leaf door		
Door thickness (minimum~less than) mm	Classification	L dimension (mm)
35~37	18L	18
37~42	20L	20
43~47	23L	23
47~51	25L	25
53	28L	28

\* Indicate the door thickness when ordering.

**▲ Precautions when selecting a strike plate**

The strike plate shown in the table above is set as standard according to the door thickness, however in the case of a single leaf door and depending on the conditions of the door and frame, the strike plate may protrude by a large amount.

Check the conditions of the door and frame, and select a strike plate with the optimal lip (L) dimension from the table so that the amount of strike plate protrusion is not too large.

**AXFC, ASC  
AXFCL, ASCL**

**Mortise lock cup handle locks  
AXFC, AXFCL,  
ASC, ASCL**

Model	Compatible cylinders	Model No.	Backset	Door thickness (Contact GOAL for more information.)
<b>AXFC</b>	GP [GP]	6 pins [P]	64 mm 76 mm	Cup handle on both sides or one side: 33~43 / 43~53 mm
<b>AXFCL</b>	V18 [V]	7 pins [Z]		Cup handles on both sides: 31~33 / 33~38 / 38~43 / 43~48 / 48~53 mm
<b>ASC</b>	GV [GV]	(Note 2) 1, 3, 4, 45 5, 6, 7		Cup handle on one side: 31~33 / 33~43 / 43~53 mm
<b>ASCL</b>				

▼ Information

Precautions  
Table of contents /  
Product list  
Basic information

Cylinders  
Keying  
systems

▼ Locks

Push-pull  
locks

Lever  
handle  
locks

Mortise  
locks

Integral  
locks  
Cylindrical  
locks

Rim dead  
locks

Dead locks  
Cremon  
locks  
Glass door  
locks

**Emergency  
locks  
Cup handle  
locks**

Sliding  
door  
locks

▼ Electric locks  
Security systems

Ten-key  
pads

Key switches  
Interlock /  
emergency  
door  
systems

Hotel card  
locks

Electric  
locks

Electrical  
conductors,  
Control  
boxes

**Dimensions**

**Dimensions/Notch** (Unit: mm)

(The model No. 4, 45, 6 notches is the same as No. 5 in the illustration. However create a thumbturn mounting hole (No. 3) or cylinder mounting hole (No. 7) on one side only. For No. 1, create a handle mounting hole only.)

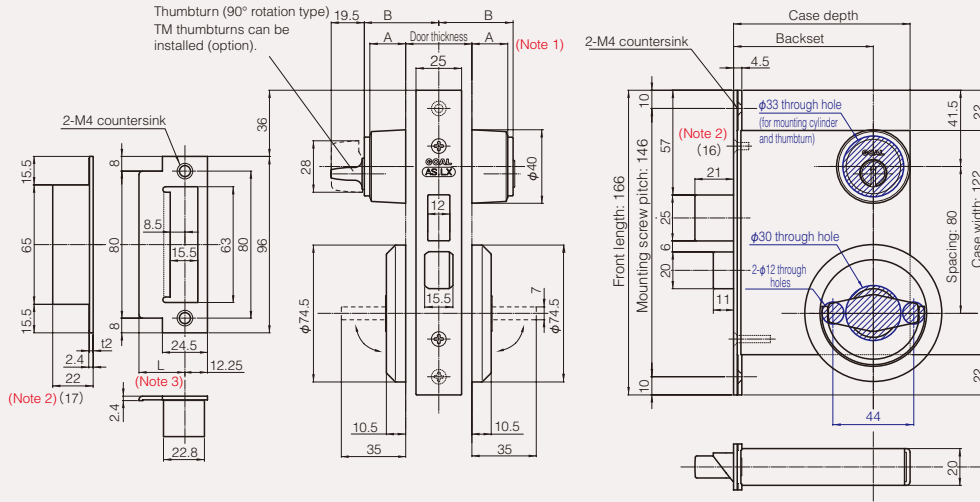
● **V-ASC-5**(backset 64, 76 mm) <Illustration shows a V18 cylinder, cup handles on both sides. >

\* A cup handle can also be installed on one side (knob on the other side). In this case, the models are V-ASC-5Q and others, and the knob is on the inside.

\* For the AXFC, AXFCL lock body, refer to the dimensions of AXF mortise locks (P.106). The dimensions of the cup handles (AHC cup handles) are the same as ASC, ASCL.

Door thickness: ## mm or more~less than ## mm

Backset (mm)	64	76
Case depth (mm)	84	96



Note 2: For ASC, ASCL-4, 45 partition locks, the deadbolt throw is 16 mm and a strike box with depth 17 mm is set.

(Note 1)

**Dimensions A and B for cylinders and thumbturns**

Door thickness (mm)	Dimension (mm)	
	A (Collar height)	B (Cylinder and thumbturn height)
31~43	19.5	38.5
43~53	14.5	38.5
53~63	19.5	48.5
63~73	14.5	48.5
73~83	19.5	58.5

**Strike plate lip (L) dimension** (Note 3)

For single leaf door		
Door thickness (minimum~less than) mm	Classification	L dimension (mm)
31~33	20L	20
33~43	25L	25
43~53	30L	30
53~60	33L	33

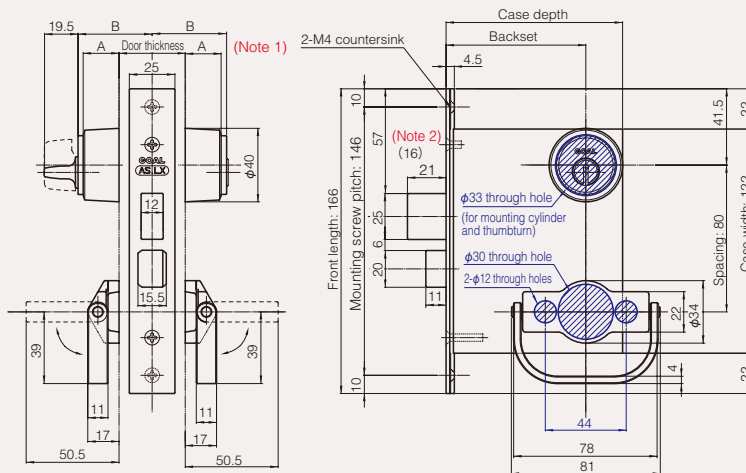
For double leaf door		
Door thickness (minimum~less than) mm	Classification	L dimension (mm)
31~33	16L	16
33~37	18L	18
37~42	20L	20
43~47	23L	23
47~51	25L	25
53~57	28L	28
57~61	30L	30
63~67	33L	33

⚠ **Precautions when selecting a strike plate**

The strike plate shown in the table above is set as standard according to the door thickness, however in the case of a single leaf door and depending on the conditions of the door and frame, the strike plate may protrude by a large amount. Check the conditions of the door and frame, and select a strike plate with the optimal lip (L) dimension from the table so that the amount of strike plate protrusion is not too large.

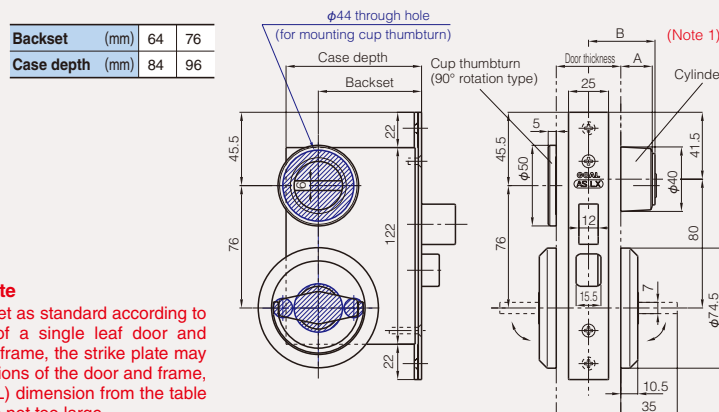
● **V-ASCL-5**(backset 64, 76 mm)

(The strike plate is the same as the ASC shown above.)



Backset (mm)	64	76
Case depth (mm)	84	96

● **ASC-5N (cup thumbturn)** (backset 64, 76 mm) (door thickness 38~41 mm)



Backset (mm)	64	76
Case depth (mm)	84	96

Information

Precautions  
Table of contents /  
Product list  
Basic information

Cylinders  
Keying  
systems

Locks

Push-pull  
locks

Lever  
handle  
locks

Mortise  
locks

Integral  
locks  
Cylindrical  
locks

Rim dead  
locks

Dead locks  
Cremon  
locks  
Glass door  
locks

Emergency  
locks  
Cup handle  
locks

Sliding  
door locks

Electric locks  
Security systems

Ten-key  
pads

Key switches  
Interlock /  
emergency  
door  
systems

Hotel card  
locks

Electric  
locks

Electrical  
conductors,  
Control  
boxes

Dimensions

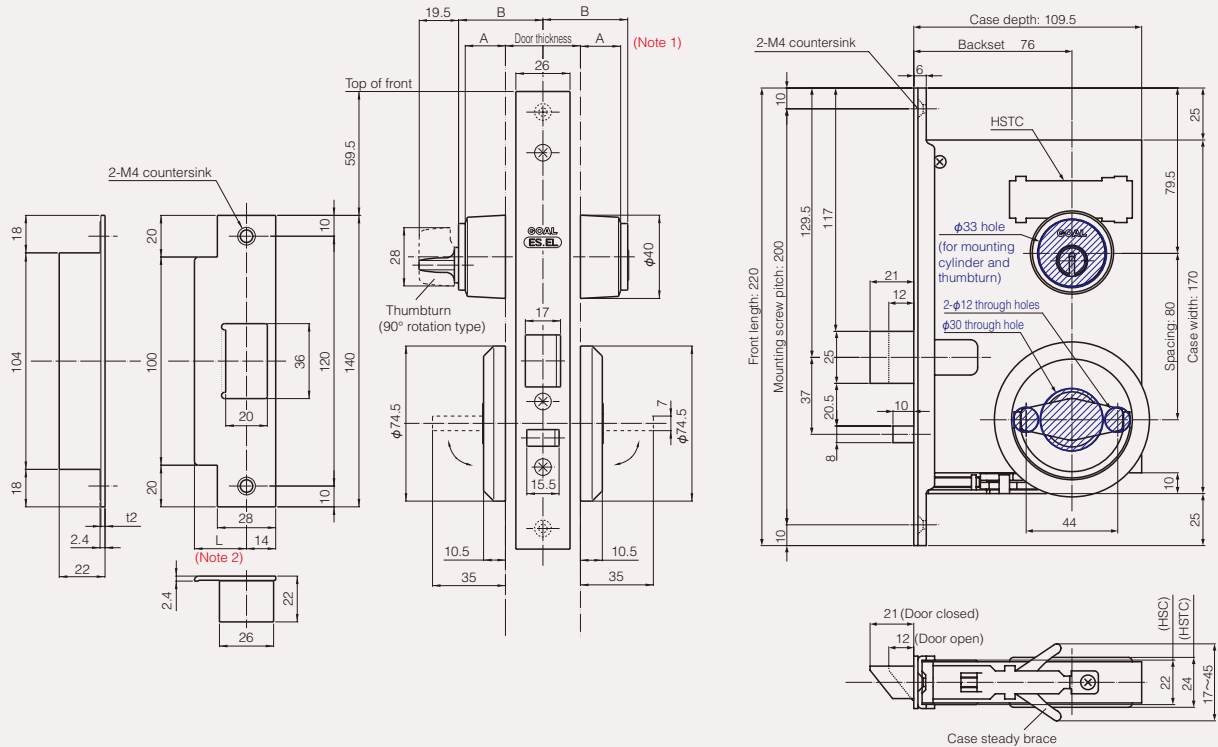
Model	Compatible cylinders	Model No.	Backset	Door thickness (Contact GOAL for more information.)
<b>HSC, HSTC</b> (Automatic locking type)	GP [GP] V18 [V] GV [GV]	6 pins [P] 7 pins [Z]	3,5,6,7	76 mm 33~43 / 43~53 mm (Gap: 6 mm or less)

Door thickness: ## mm or more~less than ## mm

**Dimensions/Notch** (Unit: mm) (The model No. 6 notch is the same as No. 5 in the illustration.  
However create a thumbturn mounting hole (No. 3) or cylinder mounting hole (No. 7) on one side only.)

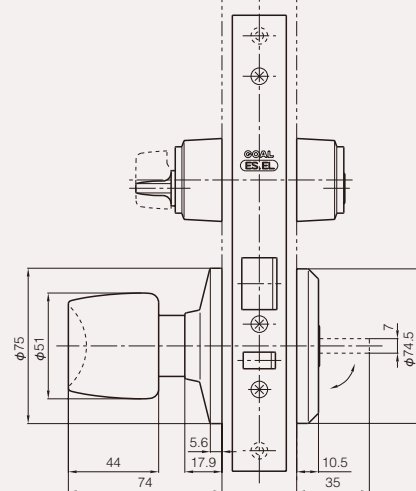
● **V-HSC, HSTC-5** <Illustration shows model No. 5, V18 cylinder, cup handles on both sides. >

\* The dimensions of HSC and HSTC are the same.  
\* A knob can also be installed on one side (door inside). When ordering, specify as, for example, V-HSC-5Q.  
(Refer to illustration below.)



● **V-HSC, HSTC-5Q** <Illustration shows cup handle on one side, Q type knob on one side. >

(\* Dimensions not listed, notch hole, and strike plate are the same as the illustration above.)



(Note 1)  
**Dimensions A and B for cylinders and thumbturns**

Door thickness (mm)	Dimension (mm)	
	A (Collar height)	B (Cylinder and thumbturn height)
33~43	19.5	38.5
43~53	14.5	38.5
53~63	19.5	48.5
63~73	14.5	48.5
73~83	19.5	58.5

(Note 2)  
**Strike plate lip (L) dimension**

For single leaf door ⚠			For double leaf door		
Door thickness (minimum~less than) mm	Classification	L dimension (mm)	Door thickness (minimum~less than) mm	Classification	L dimension (mm)
33~43	25L	25	33~37	18L	18
43~53	30L	30	37~42	20L	20
53~60	33L	33	43~47	23L	23
			47~51	25L	25
			53~57	28L	28
			57~61	30L	30
			63~67	33L	33

⚠ **Precautions when selecting a strike plate**

The strike plate shown in the table at left is set as standard according to the door thickness, however in the case of a single leaf door and depending on the conditions of the door and frame, the strike plate may protrude by a large amount. Check the conditions of the door and frame, and select a strike plate with the optimal lip (L) dimension from the table so that the amount of strike plate protrusion is not too large.

# UCC Integral locks Cup handle locks UCC

Note 1: \* Indicates the knob design (Q, Y, K, B, etc.).

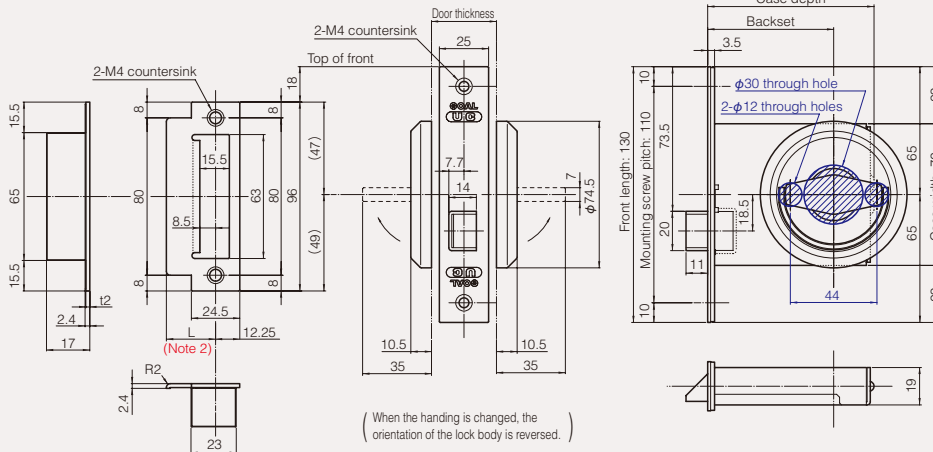
Model No.	Backset	Door thickness (Contact GOAL for more information.)
1	57 mm	Cup handle on both sides: 29~33 (minimum 28 with 100 mm) / 33~38 / 38~43 / 43~48 / 48~53 mm
	64 mm	
	83 mm	
	100 mm	
1*, 3*, 7*		Cup handle on one side: 29 (minimum 28 for 100 mm)~33 / 33~43 / 43~53 mm

Door thickness: ## mm or more~less than ## mm

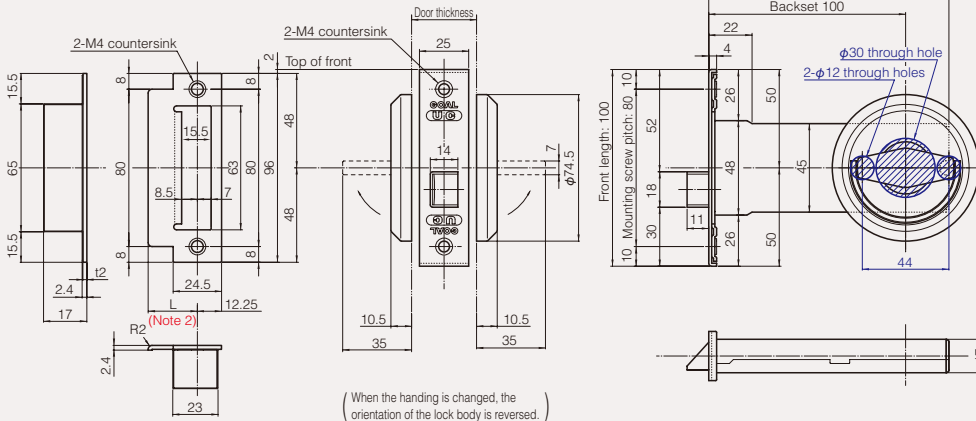
## Dimensions/Notch (Unit: mm) (The notch is the same for model No. 1, 3, 7.)

### ● UCC-1 (cup handle on both sides) (backset 57, 64, 83 mm)

Backset (mm)	57	64	83
Case depth (mm)	77.5	84.5	103.5



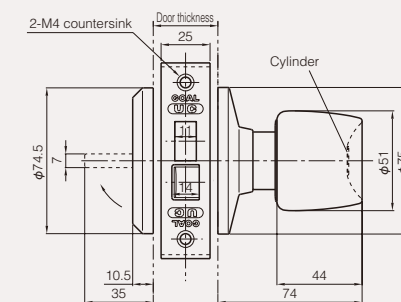
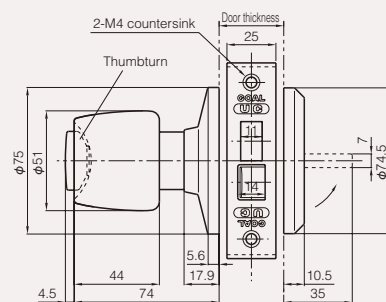
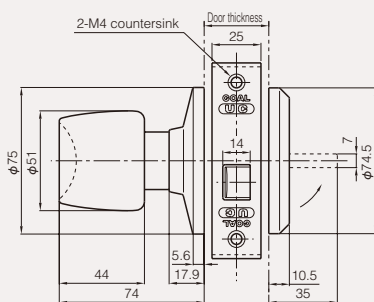
### ● UCC-1 (cup handle on both sides) (backset 100 mm)



### ● UCC-1Q (cup handle on one side)

### ● UCC-3Q (cup handle on one side)

### ● UCC-7Q (cup handle on one side)



(Note 2)

## Strike plate lip (L) dimension

For single leaf door		
Door thickness (minimum~less than) mm	Classification	L dimension (mm)
29~33	20L	20
33~38	25L	25
38~43		
43~48	30L	30
48~53		
53~58	33L	33
58~63		

For double leaf door		
Door thickness (minimum~less than) mm	Classification	L dimension (mm)
29~33	16L	16
33~37	18L	18
37~41	20L	20
41~47	23L	23
47~51	25L	25
51~57	28L	28
57~61	30L	30
61~67	33L	33

### Precautions when selecting a strike plate

The strike plate shown in the table at left is set as standard according to the door thickness, however in the case of a single leaf door and depending on the conditions of the door and frame, the strike plate may protrude by a large amount.

Check the conditions of the door and frame, and select a strike plate with the optimal lip (L) dimension from the table so that the amount of strike plate protrusion is not too large.

## Information

Precautions  
Table of contents /  
Product list  
Basic information

## Cylinders Keying systems

## Locks

## Push-pull locks

## Lever handle locks

## Mortise locks

## Integral locks Cylindrical locks

## Rim dead locks

## Dead locks Cremon locks Glass door locks

## Emergency locks Cup handle locks

## Sliding door locks

## Electric locks Security systems

## Ten-key pads

## Key switches Interlock / emergency door systems

## Hotel card locks

## Electric locks

## Electrical conductors, Control boxes

## Dimensions



# Integral locks Cup handle locks GC

Note 1: \* Indicates the knob design (Q, Y, K, B, etc.).

Model No.	Backset	Door thickness (Contact GOAL for more information.)
1	64 mm	Cup handle on both sides: 28~33 / 33~38 / 38~43 / 43~48 / 48~53 mm (Note 2)
(Note 1) 1*, 3*, 7*	100 mm	Cup handle on one side: 28~33 / 33~43 / 43~53 mm (Note 2)

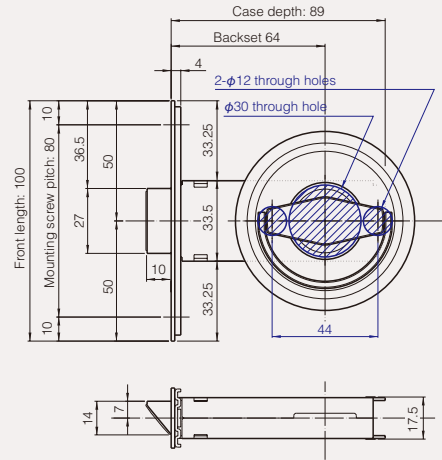
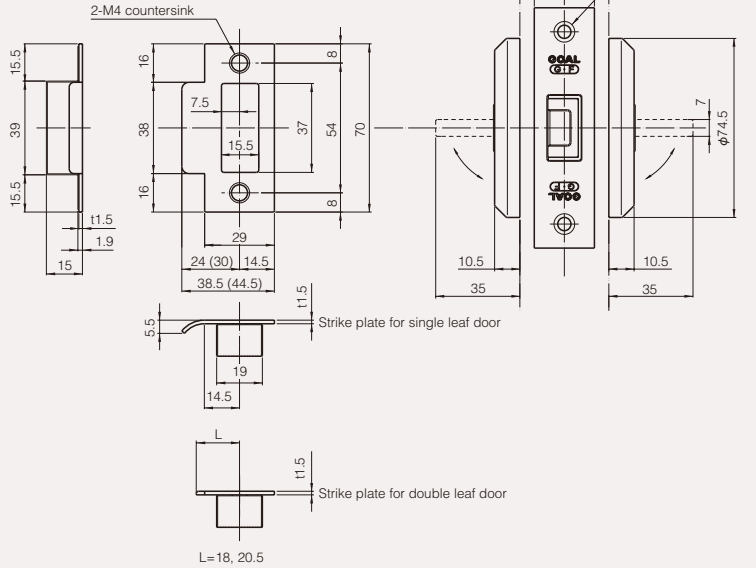
## Dimensions/Notch (Unit: mm) (The notch is the same for model No. 1, 3, 7.)

Door thickness: ## mm or more~less than ## mm

### ● GC-1 (backset 64 mm) (cup handle on both sides)

- Standard strike plate, No. 12 strike plate (Note 2)

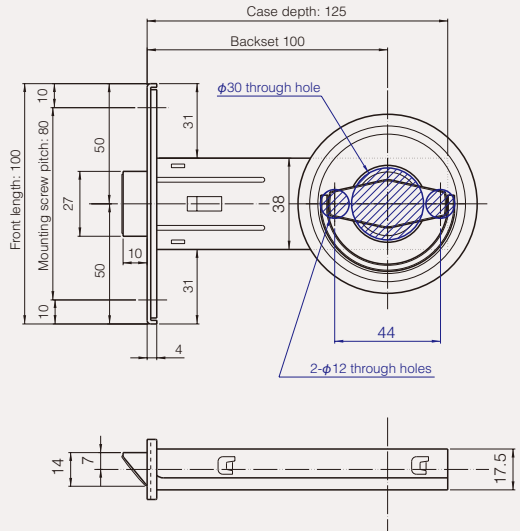
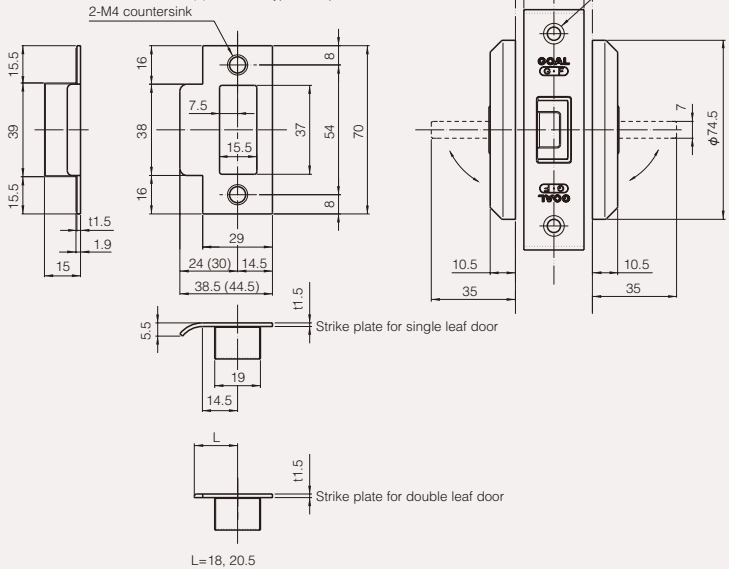
Note 2: The standard strike plate is used for door thickness 28~43 mm, and the No. 12 type strike plate is used for door thickness 43~53 mm. Dimensions in ( ) are No. 12 type strike plate dimensions.



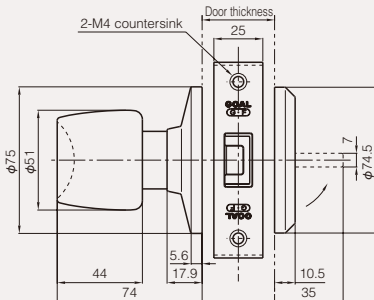
### ● GC-1 (backset 100 mm) (cup handle on both sides)

- Standard strike plate, No. 12 strike plate (Note 2)

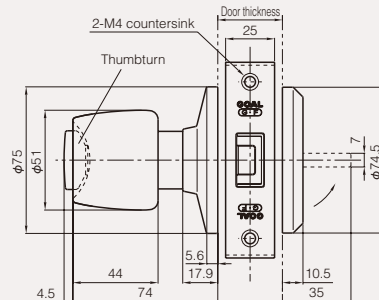
Note 2: The standard strike plate is used for door thickness 28~43 mm, and the No. 12 type strike plate is used for door thickness 43~53 mm. Dimensions in ( ) are No. 12 type strike plate dimensions.



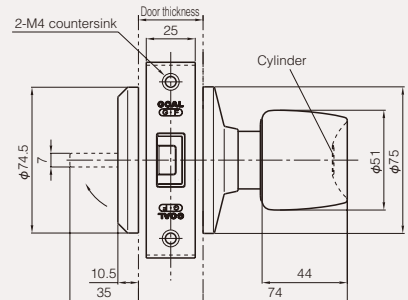
### ● GC-1Q (cup handle on one side)



### ● GC-3Q (cup handle on one side)



### ● GC-7Q (cup handle on one side)



Information

Precautions  
Table of contents /  
Product list  
Basic information

Cylinders  
Keying  
systems

Locks

Push-pull  
locks

Lever  
handle  
locks

Mortise  
locks

Integral  
locks  
Cylindrical  
locks

Rim dead  
locks

Dead locks  
Cremon  
locks  
Glass door  
locks

Emergency  
locks  
Cup handle  
locks

Sliding  
door locks

Electric locks  
Security systems

Ten-key  
pads

Key switches  
Interlock /  
emergency  
door  
systems

Hotel card  
locks

Electric  
locks

Electrical  
conductors,  
Control  
boxes

Dimensions